



ELECTRONIC COPY

LABORATORY GROWN DIAMOND REPORT

October 5, 2024	
IGI Report Number	LG657458203
Description	LABORATORY GROWN DIAMOND
Shape and Cutting Style	CUSHION BRILLIANT
Measurements	8.64 X 6.07 X 3.98 MM

GRADING RESULTS

Carat Weight	1.59 CARAT
Color Grade	E
Clarity Grade	VS2

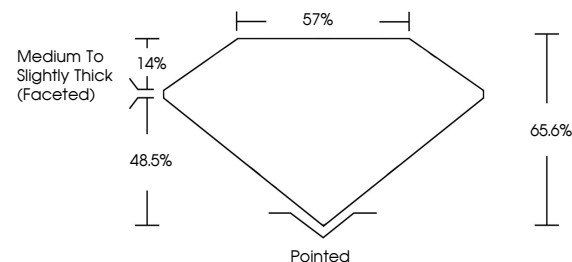
ADDITIONAL GRADING INFORMATION

Polish	EXCELLENT
Symmetry	EXCELLENT
Fluorescence	NONE
Inscription(s)	15 LG657458203

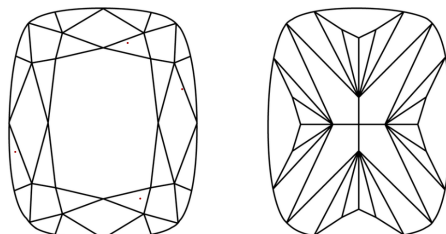
Comments: This Laboratory Grown Diamond was created by Chemical Vapor Deposition (CVD) growth process.
Type IIa

LG657458203
Report verification at lgi.org

PROPORTIONS

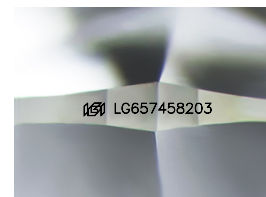


CLARITY CHARACTERISTICS



KEY TO SYMBOLS

Red symbols indicate internal characteristics.
Green symbols indicate external characteristics.



Sample Image Used

COLOR

D E F G H I J Faint Very Light Light

CLARITY

IF	VVS ^{1,2}	VS ^{1,2}	SI ^{1,2}	I ^{1,3}
Internally Flawless	Very Very Slightly Included	Very Slightly Included	Slightly Included	Included



© IGI 2020, International Gemological Institute

FD - 10 20

www.igi.org

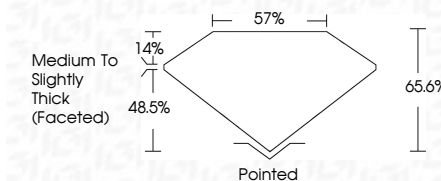
LABORATORY GROWN DIAMOND REPORT



October 5, 2024	
IGI Report Number	LG657458203
Description	LABORATORY GROWN DIAMOND
Shape and Cutting Style	CUSHION BRILLIANT
Measurements	8.64 X 6.07 X 3.98 MM

GRADING RESULTS

Carat Weight	1.59 CARAT
Color Grade	E
Clarity Grade	VVS 2



ADDITIONAL GRADING INFORMATION

Polish	EXCELLENT
Symmetry	EXCELLENT
Fluorescence	NONE
Inscription(s)	 LG657458203
<p>Comments: This Laboratory Grown Diamond was created by Chemical Vapor Deposition (CVD) growth process.</p> <p>Type IIa</p>	



October 5, 2024
GI Report No LG657458203
CUSHION BRILLIANT

CUSHION BRILLIANT	6.64 X 6.07 X 3.98 MM			1.69 CARAT
	Color Weight			E
	Color Grade			VVS 2
	Clarity Grade			65.6%
	Depth			57%
	Table			Medium To Slightly Thick (faceted)
	Girdle			Pointed
	Culet			EXCELLENT
	Polish			EXCELLENT
	Symmetry			NONE
	Fluorescence			None (4547452020)

Comments:
This Laboratory Grown Diamond was created by Chemical Vapor Deposition (CVD) growth process.