



**INTERNATIONAL  
GEMOLOGICAL  
INSTITUTE**

**LABORATORY GROWN DIAMOND REPORT**

**IGI LABORATORY GROWN DIAMOND IDENTIFICATION REPORT**

December 3, 2024  
 IGI Report Number LG657439150  
 Description LABORATORY GROWN DIAMOND  
 Shape and Cutting Style EMERALD CUT  
 Measurements 7.34 X 5.07 X 3.33 MM

**GRADING RESULTS**

Carat Weight 1.21 CARAT  
 Color Grade FANCY VIVID YELLOW  
 Clarity Grade VS 1  
 Cut Grade VERY GOOD

**ADDITIONAL GRADING INFORMATION**

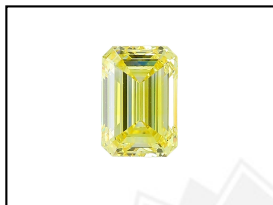
Polish EXCELLENT  
 Symmetry EXCELLENT  
 Fluorescence NONE  
 Inscription(s) IGI LG657439150

Comments: As Grown - No indication of post-growth treatment. This Laboratory Grown Diamond was created by High Pressure High Temperature (HPHT) growth process.

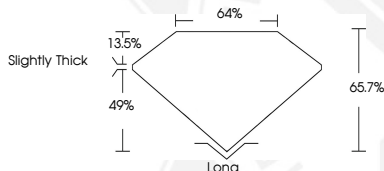
**ELECTRONIC COPY**

**LABORATORY GROWN  
DIAMOND REPORT**

**LG657439150**



**LASERSCRIBE<sup>SM</sup>**  
Sample Images Used



**IGI LABORATORY GROWN  
DIAMOND ID REPORT**

December 3, 2024  
 IGI Report Number **LG657439150**  
**EMERALD CUT**  
**7.34 X 5.07 X 3.33 MM**  
 Carat Weight 1.21 CARAT  
 Color Grade FANCY VIVID  
 YELLOW  
 Clarity Grade VS 1  
 Cut Grade VERY GOOD  
 Polish EXCELLENT  
 Symmetry EXCELLENT  
 Fluorescence NONE  
 Inscription(s) IGI LG657439150

Comments: As Grown - No indication of post-growth treatment. This Laboratory Grown Diamond was created by High Pressure High Temperature (HPHT) growth process.

**IGI LABORATORY GROWN  
DIAMOND ID REPORT**

December 3, 2024  
 IGI Report Number **LG657439150**  
**EMERALD CUT**  
**7.34 X 5.07 X 3.33 MM**  
 Carat Weight 1.21 CARAT  
 Color Grade FANCY VIVID  
 YELLOW  
 Clarity Grade VS 1  
 Cut Grade VERY GOOD  
 Polish EXCELLENT  
 Symmetry EXCELLENT  
 Fluorescence NONE  
 Inscription(s) IGI LG657439150

Comments: As Grown - No indication of post-growth treatment. This Laboratory Grown Diamond was created by High Pressure High Temperature (HPHT) growth process.

THIS DOCUMENT WAS PRODUCED WITH THE FOLLOWING SECURITY MEASURES: SPECIAL DOCUMENT PAPER, INK SCREENS, WATERMARK, BACKGROUND DESIGN, HOLOGRAM AND OTHER SECURITY FEATURES NOT LISTED AND DO EXCEED DOCUMENT SECURITY INDUSTRY GUIDELINES.

For terms & conditions and to verify this report, please visit [www.igi.org](http://www.igi.org)