



**INTERNATIONAL
GEMOLOGICAL
INSTITUTE**

LABORATORY GROWN DIAMOND REPORT

IGI LABORATORY GROWN DIAMOND IDENTIFICATION REPORT

December 3, 2024
 IGI Report Number LG657439144
 Description LABORATORY GROWN DIAMOND
 Shape and Cutting Style EMERALD CUT
 Measurements 7.53 X 5.06 X 3.41 MM

GRADING RESULTS

Carat Weight 1.29 CARAT
 Color Grade FANCY VIVID YELLOW
 Clarity Grade VVS 2
 Cut Grade EXCELLENT

ADDITIONAL GRADING INFORMATION

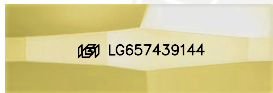
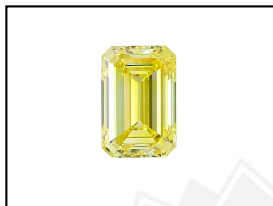
Polish EXCELLENT
 Symmetry VERY GOOD
 Fluorescence NONE
 Inscription(s) IGI LG657439144

Comments: As Grown - No indication of post-growth treatment. This Laboratory Grown Diamond was created by High Pressure High Temperature (HPHT) growth process.

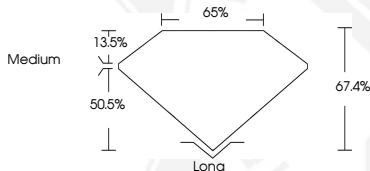
ELECTRONIC COPY

**LABORATORY GROWN
DIAMOND REPORT**

LG657439144



LASERSCRIBESM
Sample Images Used



**IGI LABORATORY GROWN
DIAMOND ID REPORT**

December 3, 2024
 IGI Report Number **LG657439144**
EMERALD CUT
7.53 X 5.06 X 3.41 MM
 Carat Weight 1.29 CARAT
 Color Grade FANCY VIVID
 YELLOW
 Clarity Grade VVS 2
 Cut Grade EXCELLENT
 Polish EXCELLENT
 Symmetry VERY GOOD
 Fluorescence NONE
 Inscription(s) IGI LG657439144

Comments: As Grown - No indication of post-growth treatment. This Laboratory Grown Diamond was created by High Pressure High Temperature (HPHT) growth process.

**IGI LABORATORY GROWN
DIAMOND ID REPORT**

December 3, 2024
 IGI Report Number **LG657439144**
EMERALD CUT
7.53 X 5.06 X 3.41 MM
 Carat Weight 1.29 CARAT
 Color Grade FANCY VIVID
 YELLOW
 Clarity Grade VVS 2
 Cut Grade EXCELLENT
 Polish EXCELLENT
 Symmetry VERY GOOD
 Fluorescence NONE
 Inscription(s) IGI LG657439144

Comments: As Grown - No indication of post-growth treatment. This Laboratory Grown Diamond was created by High Pressure High Temperature (HPHT) growth process.

THIS DOCUMENT WAS PRODUCED WITH THE FOLLOWING SECURITY MEASURES: SPECIAL DOCUMENT PAPER, INK SCREENS, WATERMARK, BACKGROUND DESIGN, HOLOGRAM AND OTHER SECURITY FEATURES NOT LISTED AND DO EXCEED DOCUMENT SECURITY INDUSTRY GUIDELINES.

For terms & conditions and to verify this report, please visit www.igi.org