



**INTERNATIONAL  
GEMOLOGICAL  
INSTITUTE**

**ELECTRONIC COPY**

**LABORATORY GROWN  
DIAMOND REPORT**

**IGI LABORATORY GROWN  
DIAMOND ID REPORT**

December 4, 2024

IGI Report Number **LG657439098**

**EMERALD CUT**

**7.47 X 4.92 X 3.46 MM**

Carat Weight 1.28 CARAT  
Color Grade FANCY VIVID YELLOW

Clarity Grade VVS 2

Cut Grade VERY GOOD

Polish EXCELLENT

Symmetry VERY GOOD

Fluorescence NONE

Inscription(s) LG657439098

Comments: As Grown - No indication of post-growth treatment. This Laboratory Grown Diamond was created by High Pressure High Temperature (HPHT) growth process.

**LABORATORY GROWN DIAMOND REPORT**

**IGI LABORATORY GROWN DIAMOND IDENTIFICATION REPORT**

December 4, 2024

IGI Report Number LG657439098

Description LABORATORY GROWN DIAMOND

Shape and Cutting Style EMERALD CUT

Measurements 7.47 X 4.92 X 3.46 MM

**GRADING RESULTS**

Carat Weight 1.28 CARAT

Color Grade FANCY VIVID YELLOW

Clarity Grade VVS 2

Cut Grade VERY GOOD

**ADDITIONAL GRADING INFORMATION**

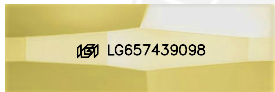
Polish EXCELLENT

Symmetry VERY GOOD

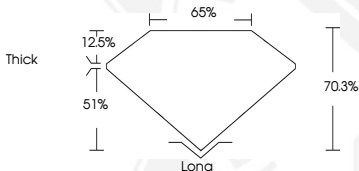
Fluorescence NONE

Inscription(s) LG657439098

Comments: As Grown - No indication of post-growth treatment. This Laboratory Grown Diamond was created by High Pressure High Temperature (HPHT) growth process.



**LASERSCRIBE<sup>SM</sup>**  
Sample Images Used



**IGI LABORATORY GROWN  
DIAMOND ID REPORT**

December 4, 2024

IGI Report Number **LG657439098**

**EMERALD CUT**

**7.47 X 4.92 X 3.46 MM**

Carat Weight 1.28 CARAT  
Color Grade FANCY VIVID YELLOW

Clarity Grade VVS 2

Cut Grade VERY GOOD

Polish EXCELLENT

Symmetry VERY GOOD

Fluorescence NONE

Inscription(s) LG657439098

Comments: As Grown - No indication of post-growth treatment. This Laboratory Grown Diamond was created by High Pressure High Temperature (HPHT) growth process.

THIS DOCUMENT WAS PRODUCED WITH THE FOLLOWING SECURITY MEASURES: SPECIAL DOCUMENT PAPER, INK SCREENS, WATERMARK, BACKGROUND DESIGN, HOLOGRAM AND OTHER SECURITY FEATURES NOT LISTED AND DO EXCEED DOCUMENT SECURITY INDUSTRY GUIDELINES.

For terms & conditions and to verify this report, please visit [www.igi.org](http://www.igi.org)