



ELECTRONIC COPY

LABORATORY GROWN DIAMOND REPORT

October 7, 2024
IGI Report Number LG657425670
Description LABORATORY GROWN DIAMOND
Shape and Cutting Style CUT CORNERED SQUARE MODIFIED BRILLIANT
Measurements 6.49 X 6.40 X 4.19 MM

GRADING RESULTS

Carat Weight 1.57 CARAT
Color Grade E
Clarity Grade VS 1

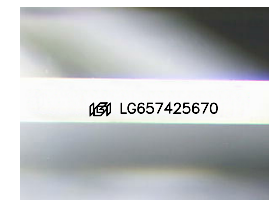
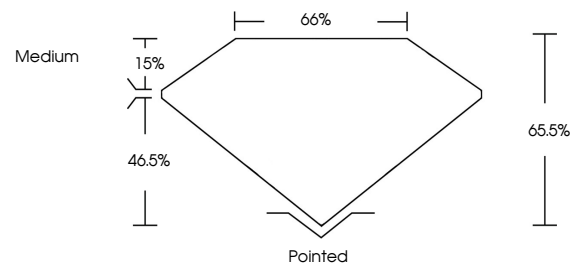
ADDITIONAL GRADING INFORMATION

Polish EXCELLENT
Symmetry EXCELLENT
Fluorescence NONE

Inscription(s) IGI LG657425670

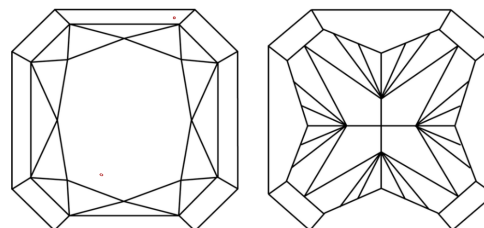
Comments: This Laboratory Grown Diamond was created by Chemical Vapor Deposition (CVD) growth process. Type IIa

PROPORTIONS



Sample Image Used

CLARITY CHARACTERISTICS



KEY TO SYMBOLS

Red symbols indicate internal characteristics.
Green symbols indicate external characteristics.

COLOR

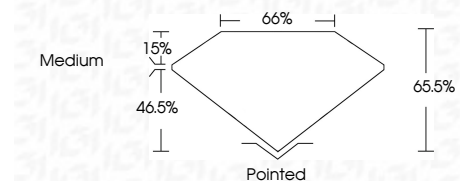
D E F G H I J Faint Very Light Light

CLARITY

IF	VS 1-2	VS 1-2	SI 1-2	I 1-3
Internally Flawless	Very Very Slightly Included	Very Slightly Included	Slightly Included	Included



October 7, 2024
IGI Report Number LG657425670
Description LABORATORY GROWN DIAMOND
Shape and Cutting Style CUT CORNERED SQUARE MODIFIED BRILLIANT
Measurements 6.49 X 6.40 X 4.19 MM
GRADING RESULTS
Carat Weight 1.57 CARAT
Color Grade E
Clarity Grade VS 1



ADDITIONAL GRADING INFORMATION

Polish EXCELLENT
Symmetry EXCELLENT
Fluorescence NONE
Inscription(s) IGI LG657425670

Comments: This Laboratory Grown Diamond was created by Chemical Vapor Deposition (CVD) growth process. Type IIa



October 7, 2024
IGI Report No LG657425670
CUT CORNERED SQUARE MODIFIED BRILLIANT
6.49 X 6.40 X 4.19 MM
1.57 CARAT E
VS 1
66% 65%
Medium
Pointed
EXCELLENT
EXCELLENT
NONE
IGI LG657425670
Comments: This Laboratory Grown Diamond was created by Chemical Vapor Deposition (CVD) growth process. Type IIa