



**ELECTRONIC COPY**

LG657425027  
Report verification at igi.org



October 15, 2024

IGI Report Number **LG657425027**

Description **LABORATORY GROWN DIAMOND**

Shape and Cutting Style **CUT CORNERED  
RECTANGULAR MODIFIED  
BRILLIANT**

Measurements **6.94 X 4.86 X 3.40 MM**

**GRADING RESULTS**

Carat Weight **1.08 CARAT**

Color Grade **FANCY VIVID BLUE**

Clarity Grade **INTERNALLY FLAWLESS**

October 15, 2024

IGI Report Number **LG657425027**

Description **LABORATORY GROWN DIAMOND**

Shape and Cutting Style **CUT CORNERED RECTANGULAR  
MODIFIED BRILLIANT**

Measurements **6.94 X 4.86 X 3.40 MM**

**GRADING RESULTS**

Carat Weight **1.08 CARAT**

Color Grade **FANCY VIVID BLUE**

Clarity Grade **INTERNALLY FLAWLESS**

**ADDITIONAL GRADING INFORMATION**

Polish **EXCELLENT**

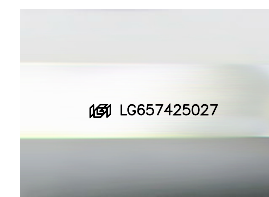
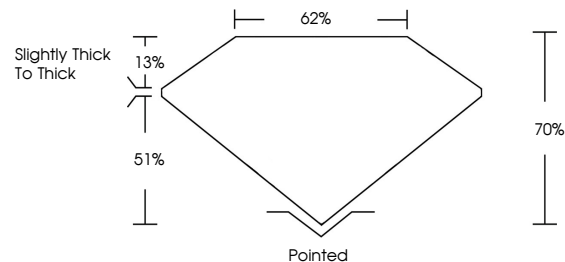
Symmetry **EXCELLENT**

Fluorescence **NONE**

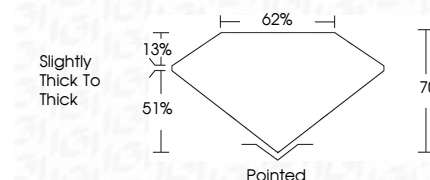
Inscription(s) **IGI LG657425027**

Comments: This Laboratory Grown Diamond was created by High Pressure High Temperature (HPHT) growth process. Indications of post-growth treatment.

**PROPORTIONS**



Sample Image Used



**COLOR**

D E F G H I J Faint Very Light Light

**CLARITY**

IF VS<sup>1-2</sup> VS<sup>1-2</sup> SI<sup>1-2</sup> I<sup>1-3</sup>

Internally Flawless Very Very Slightly Included Very Slightly Included Slightly Included Included

**ADDITIONAL GRADING INFORMATION**

Polish **EXCELLENT**

Symmetry **EXCELLENT**

Fluorescence **NONE**

Inscription(s) **IGI LG657425027**

Comments: This Laboratory Grown Diamond was created by High Pressure High Temperature (HPHT) growth process. Indications of post-growth treatment.



**IGI**



October 15, 2024	IGI Report No LG657425027	CUT CORNERED RECT. MODIFIED BRILLIANT	6.94 X 4.86 X 3.40 MM	1.08 CARAT	FANCY VIVID BLUE	IF	70%	62%	Slightly Thick To Thick	Pointed	EXCELLENT	EXCELLENT	NONE	IGI LG657425027
				Carat Weight	Color Grade	Clarity Grade	Depth	Table	Graile	Culet	Polish	Symmetry	Fluorescence	Inscription(s)

Comments: This Laboratory Grown Diamond was created by High Pressure High Temperature (HPHT) growth process. Indications of post-growth treatment.