



ELECTRONIC COPY

LABORATORY GROWN DIAMOND REPORT

October 7, 2024	
IGI Report Number	LG657419073
Description	LABORATORY GROWN DIAMOND
Shape and Cutting Style	CUT CORNERED RECTANGULAR MODIFIED BRILLIANT
Measurements	8.29 X 5.73 X 3.79 MM

GRADING RESULTS

Carat Weight	1.56 CARAT
Color Grade	D
Clarity Grade	VS 1

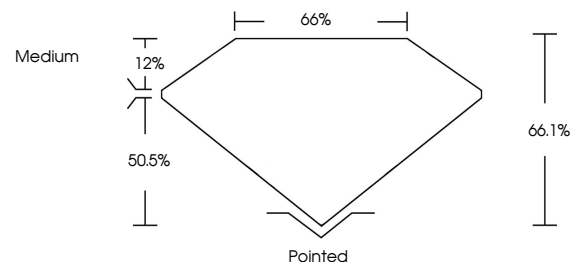
ADDITIONAL GRADING INFORMATION

Polish	EXCELLENT
Symmetry	EXCELLENT
Fluorescence	NONE
Inscription(s)	 LG657419073

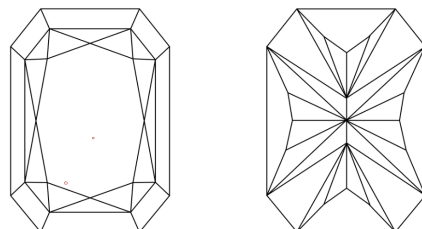
Comments: This Laboratory Grown Diamond was created by Chemical Vapor Deposition (CVD) growth process.
Type IIa

LG657419073
Report verification at lgi.org

PROPORTIONS

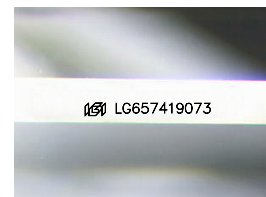


CLARITY CHARACTERISTICS



KEY TO SYMBOLS

Red symbols indicate internal characteristics.
Green symbols indicate external characteristics.



Sample Image Used

COLOR

D E F G H I J Faint Very Light Light

CLARITY

IF	VVS ¹⁻²	VS ¹⁻²	SI ¹⁻²	I ¹⁻³
Internally Flawless	Very Very Slightly Included	Very Slightly Included	Slightly Included	Included



© IGI 2020, International Gemological Institute

FD - 10 20

www.igi.org

LABORATORY GROWN DIAMOND REPORT



October 7, 2024

IGI Report Number LG657419073

Description **LABORATORY GROWN DIAMOND**

Shape and Cutting Style

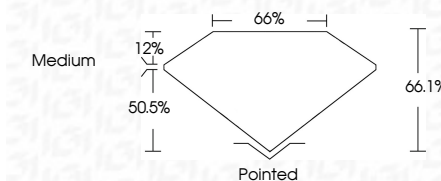
Measurements **8.29 X 5.73 X 3.79 MM**

GRADING RESULTS

Carat Weight 1.56 CARAT

Color Grade

Clarity Grade VS 1



ADDITIONAL GRADING INFORMATION

Polish	EXCELLENT
Symmetry	EXCELLENT
Fluorescence	NONE
Inscription(s)	15 LG657419073

Comments: This Laboratory Grown Diamond was created by Chemical Vapor Deposition (CVD) growth process.
Type IIa



October 7, 2024	GI Report No. LG5674	ICIT CORNERED RECT. MODIFIED BRILLIANT
29.29 X 5.79 X 3.79 MM	Color	1.55 CARAT
Curat Weight	Color Grade	D
	Clarity Grade	VS 1
	Depth	66.1%
	Table	65%
	Girdle	Medium
	Culet	Pointed
	Polish	EXCELLENT
	Symmetry	EXCELLENT
	Fluorescence	NONE
	Inscription(s)	lg5674 LG5674 1973
<p>Comments:</p> <p>This Laboratory Grown Diamond was created using the Chemical Vapor Deposition (CVD) growth process.</p>		
Type IIG		