



ELECTRONIC COPY

LG657418145
Report verification at igi.org



October 7, 2024

IGI Report Number **LG657418145**

Description **LABORATORY GROWN DIAMOND**

Shape and Cutting Style **PRINCESS CUT**

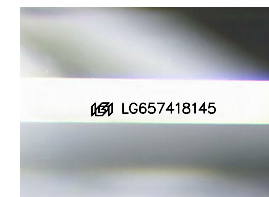
Measurements **8.04 X 7.94 X 5.36 MM**

GRADING RESULTS

Carat Weight **3.08 CARATS**

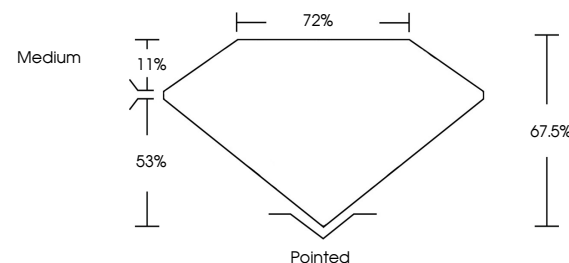
Color Grade **F**

Clarity Grade **VVS 1**

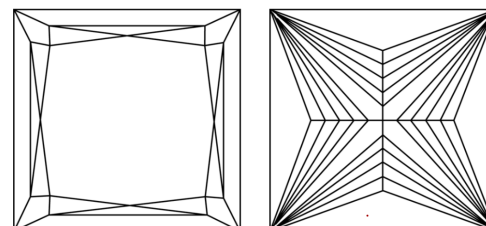


Sample Image Used

PROPORTIONS



CLARITY CHARACTERISTICS



KEY TO SYMBOLS

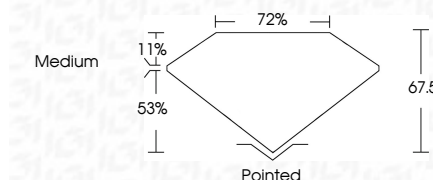
Red symbols indicate internal characteristics.
Green symbols indicate external characteristics.

COLOR

D E F G H I J Faint Very Light Light

CLARITY

IF	VS ¹⁻²	VS ¹⁻²	SI ¹⁻²	I ¹⁻³
Internally Flawless	Very Very Slightly Included	Very Slightly Included	Slightly Included	Included



ADDITIONAL GRADING INFORMATION

Polish **EXCELLENT**

Symmetry **EXCELLENT**

Fluorescence **NONE**

Inscription(s) **IGI LG657418145**

Comments: This Laboratory Grown Diamond was created by Chemical Vapor Deposition (CVD) growth process.
Type IIa



IGI

October 7, 2024
IGI Report No LG657418145
PRINCESS CUT

3.08 CARATS
F

8.04 X 7.94 X 5.36 MM
VVS 1
F
53%
72%
Medium

Pointed
EXCELLENT
EXCELLENT
NONE
IGI LG657418145

Comments: This Laboratory Grown Diamond was created by Chemical Vapor Deposition (CVD) growth process.
Type IIa

