



ELECTRONIC COPY

LG656478925 Report verification at igi.org

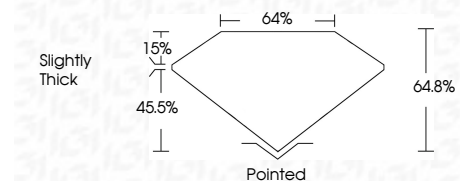


October 5, 2024 IGI Report Number LG656478925 Description LABORATORY GROWN DIAMOND

Shape and Cutting Style CUT CORNERED RECTANGULAR MODIFIED BRILLIANT

Measurements 8.38 X 5.65 X 3.66 MM

GRADING RESULTS Carat Weight 1.52 CARAT Color Grade D Clarity Grade INTERNALLY FLAWLESS

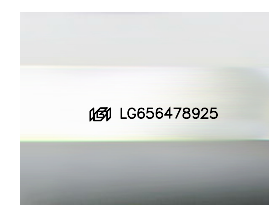


ADDITIONAL GRADING INFORMATION Polish EXCELLENT Symmetry EXCELLENT Fluorescence NONE Inscription(s) LG656478925 Comments: As Grown - No indication of post-growth treatment. This Laboratory Grown Diamond was created by High Pressure High Temperature (HPHT) growth process. Type II



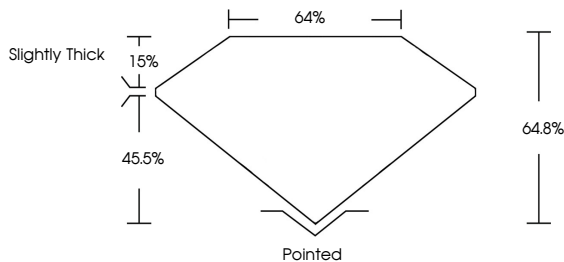
October 5, 2024 IGI Report No LG656478925 CUT CORNERED RECT. MODIFIED BRILLIANT 8.38 X 5.65 X 3.66 MM 1.52 CARAT D LF 64.8% 64% Slightly Thick Pointed EXCELLENT EXCELLENT NONE NONE LG656478925

Comments: As Grown - No indication of post-growth treatment. This Laboratory Grown Diamond was created by High Pressure High Temperature (HPHT) growth process. Type II

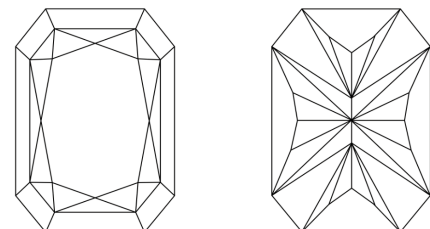


Sample Image Used

PROPORTIONS



CLARITY CHARACTERISTICS



KEY TO SYMBOLS Red symbols indicate internal characteristics. Green symbols indicate external characteristics.

COLOR table with columns D, E, F, G, H, I, J, Faint, Very Light, Light

CLARITY table with columns IF, VS 1-2, VS 1-2, SI 1-2, I 1-3, Internally Flawless, Very Very Slightly Included, Very Slightly Included, Slightly Included, Included



LABORATORY GROWN DIAMOND REPORT

October 5, 2024 IGI Report Number LG656478925 Description LABORATORY GROWN DIAMOND Shape and Cutting Style CUT CORNERED RECTANGULAR MODIFIED BRILLIANT Measurements 8.38 X 5.65 X 3.66 MM

GRADING RESULTS Carat Weight 1.52 CARAT Color Grade D Clarity Grade INTERNALLY FLAWLESS

ADDITIONAL GRADING INFORMATION Polish EXCELLENT Symmetry EXCELLENT Fluorescence NONE Inscription(s) LG656478925

Comments: As Grown - No indication of post-growth treatment. This Laboratory Grown Diamond was created by High Pressure High Temperature (HPHT) growth process. Type II