



ELECTRONIC COPY

LG656463862
Report verification at igi.org



October 9, 2024
IGI Report Number: LG656463862
Description: LABORATORY GROWN DIAMOND
Shape and Cutting Style: CUT CORNERED RECTANGULAR MODIFIED BRILLIANT
Measurements: 9.84 X 6.99 X 4.84 MM
GRADING RESULTS
Carat Weight: 3.18 CARATS
Color Grade: FANCY INTENSE YELLOW
Clarity Grade: VVS 2

LABORATORY GROWN DIAMOND REPORT

October 9, 2024
IGI Report Number: LG656463862
Description: LABORATORY GROWN DIAMOND
Shape and Cutting Style: CUT CORNERED RECTANGULAR MODIFIED BRILLIANT
Measurements: 9.84 X 6.99 X 4.84 MM

GRADING RESULTS

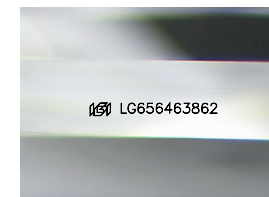
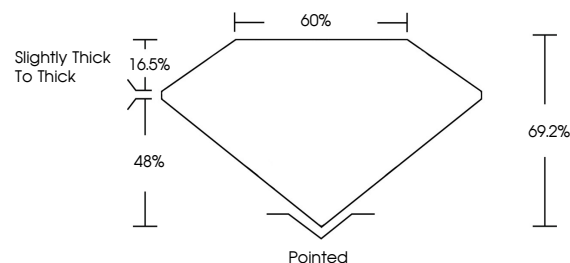
Carat Weight: 3.18 CARATS
Color Grade: FANCY INTENSE YELLOW
Clarity Grade: VVS 2

ADDITIONAL GRADING INFORMATION

Polish: EXCELLENT
Symmetry: EXCELLENT
Fluorescence: NONE
Inscription(s): LG656463862

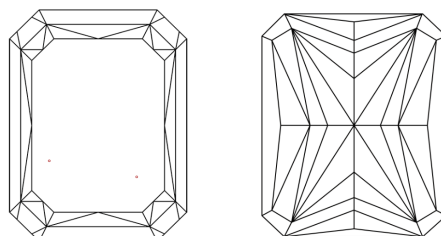
Comments: This Laboratory Grown Diamond was created by Chemical Vapor Deposition (CVD) growth process.

PROPORTIONS



Sample Image Used

CLARITY CHARACTERISTICS



KEY TO SYMBOLS

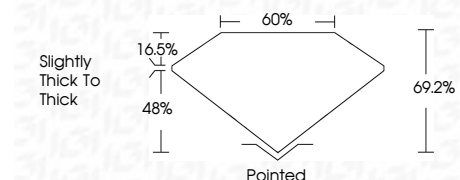
Red symbols indicate internal characteristics.
Green symbols indicate external characteristics.

COLOR

D E F G H I J Faint Very Light Light

CLARITY

Table mapping clarity grades (IF, VVS 1-2, VS 1-2, SI 1-2, I 1-3) to their descriptions (Internally Flawless, Very Very Slightly Included, etc.)



ADDITIONAL GRADING INFORMATION

Polish: EXCELLENT
Symmetry: EXCELLENT
Fluorescence: NONE
Inscription(s): LG656463862
Comments: This Laboratory Grown Diamond was created by Chemical Vapor Deposition (CVD) growth process.



October 9, 2024
IGI Report No: LG656463862
CUT CORNERED RECT. MODIFIED BRILLIANT
9.84 X 6.99 X 4.84 MM
3.18 CARATS
FANCY INTENSE YELLOW
VVS 2
48%
60%
Slightly Thick To Thick
Pointed
EXCELLENT
EXCELLENT
NONE
LG656463862
Comments: This Laboratory Grown Diamond was created by Chemical Vapor Deposition (CVD) growth process.