



**ELECTRONIC COPY**

LG656414993  
Report verification at igi.org



October 4, 2024  
IGI Report Number **LG656414993**  
Description **LABORATORY GROWN DIAMOND**  
Shape and Cutting Style **CUT CORNERED  
RECTANGULAR MODIFIED  
BRILLIANT**  
Measurements **10.19 X 7.16 X 5.08 MM**  
**GRADING RESULTS**  
Carat Weight **3.58 CARATS**  
Color Grade **D**  
Clarity Grade **VS 1**

October 4, 2024  
IGI Report Number **LG656414993**  
Description **LABORATORY GROWN DIAMOND**  
Shape and Cutting Style **CUT CORNERED RECTANGULAR  
MODIFIED BRILLIANT**  
Measurements **10.19 X 7.16 X 5.08 MM**

**GRADING RESULTS**

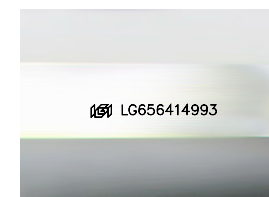
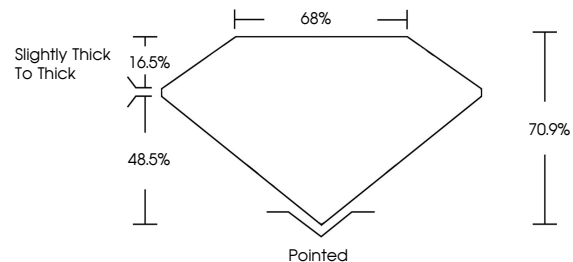
Carat Weight **3.58 CARATS**  
Color Grade **D**  
Clarity Grade **VS 1**

**ADDITIONAL GRADING INFORMATION**

Polish **EXCELLENT**  
Symmetry **EXCELLENT**  
Fluorescence **NONE**  
Inscription(s) **IGI LG656414993**

Comments: This Laboratory Grown Diamond was created by Chemical Vapor Deposition (CVD) growth process.  
Type IIa

**PROPORTIONS**



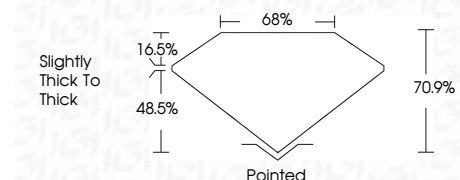
Sample Image Used

**COLOR**

D E F G H I J Faint Very Light Light

**CLARITY**

IF	VS <sup>1-2</sup>	VS <sup>1-2</sup>	SI <sup>1-2</sup>	I <sup>1-3</sup>
Internally Flawless	Very Very Slightly Included	Very Slightly Included	Slightly Included	Included



**ADDITIONAL GRADING INFORMATION**

Polish **EXCELLENT**  
Symmetry **EXCELLENT**  
Fluorescence **NONE**  
Inscription(s) **IGI LG656414993**  
Comments: This Laboratory Grown Diamond was created by Chemical Vapor Deposition (CVD) growth process.  
Type IIa



**IGI**



October 4, 2024  
IGI Report No **LG656414993**  
**CUT CORNERED RECT. MODIFIED BRILLIANT**  
**10.19 X 7.16 X 5.08 MM**  
Carat Weight **3.58 CARATS**  
Color Grade **D**  
Clarity Grade **VS 1**  
Depth **70.9%**  
Table **16.5%**  
Girdle **Slightly thick to thick**  
Culet **Pointed**  
Polish **EXCELLENT**  
Symmetry **EXCELLENT**  
Fluorescence **NONE**  
Inscription(s) **IGI LG656414993**

Comments: This Laboratory Grown Diamond was created by Chemical Vapor Deposition (CVD) growth process.  
Type IIa