



ELECTRONIC COPY

LG656414990
Report verification at igi.org



October 6, 2024
IGI Report Number **LG656414990**
Description **LABORATORY GROWN DIAMOND**
Shape and Cutting Style **CUT CORNERED
RECTANGULAR MODIFIED
BRILLIANT**
Measurements **10.48 X 7.26 X 5.00 MM**
GRADING RESULTS
Carat Weight **3.67 CARATS**
Color Grade **D**
Clarity Grade **VS 1**

October 6, 2024
IGI Report Number **LG656414990**
Description **LABORATORY GROWN DIAMOND**
Shape and Cutting Style **CUT CORNERED RECTANGULAR
MODIFIED BRILLIANT**
Measurements **10.48 X 7.26 X 5.00 MM**

GRADING RESULTS

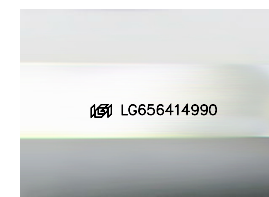
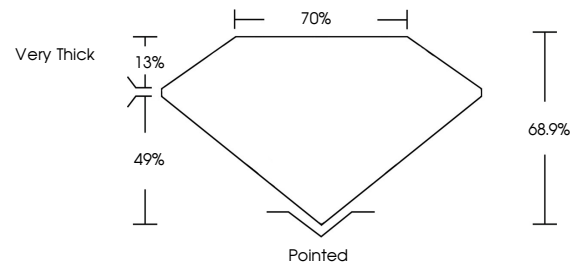
Carat Weight **3.67 CARATS**
Color Grade **D**
Clarity Grade **VS 1**

ADDITIONAL GRADING INFORMATION

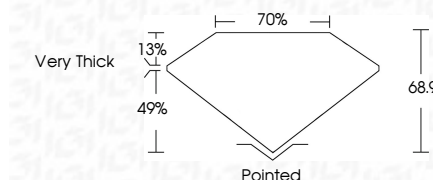
Polish **EXCELLENT**
Symmetry **EXCELLENT**
Fluorescence **NONE**
Inscription(s) **IGI LG656414990**

Comments: This Laboratory Grown Diamond was created by Chemical Vapor Deposition (CVD) growth process.
Type IIa

PROPORTIONS



Sample Image Used



ADDITIONAL GRADING INFORMATION

Polish **EXCELLENT**
Symmetry **EXCELLENT**
Fluorescence **NONE**
Inscription(s) **IGI LG656414990**
Comments: This Laboratory Grown Diamond was created by Chemical Vapor Deposition (CVD) growth process.
Type IIa

COLOR

D E F G H I J Faint Very Light Light

CLARITY

| | | | | |
|---------------------|-----------------------------|------------------------|-------------------|------------------|
| IF | VS ¹⁻² | VS ¹⁻² | SI ¹⁻² | I ¹⁻³ |
| Internally Flawless | Very Very Slightly Included | Very Slightly Included | Slightly Included | Included |



IGI

October 6, 2024
IGI Report No **LG656414990**
CUT CORNERED RECT. MODIFIED BRILLIANT
10.48 X 7.26 X 5.00 MM
Carat Weight **3.67 CARATS**
Color Grade **D**
Clarity Grade **VS 1**
Depth **68.9%**
Table **70%**
Girdle **Very Thick**
Culet **Pointed**
Polish **EXCELLENT**
Symmetry **EXCELLENT**
Fluorescence **NONE**
Inscription(s) **IGI LG656414990**

Comments: This Laboratory Grown Diamond was created by Chemical Vapor Deposition (CVD) growth process.
Type IIa