



ELECTRONIC COPY

LG656413397
Report verification at igi.org



October 4, 2024

IGI Report Number **LG656413397**

Description **LABORATORY GROWN DIAMOND**

Shape and Cutting Style **CUT CORNERED
RECTANGULAR MODIFIED
BRILLIANT**

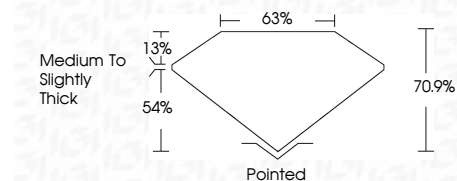
Measurements **9.00 X 5.97 X 4.23 MM**

GRADING RESULTS

Carat Weight **1.90 CARAT**

Color Grade **E**

Clarity Grade **VS 2**



ADDITIONAL GRADING INFORMATION

Polish **EXCELLENT**

Symmetry **EXCELLENT**

Fluorescence **NONE**

Inscription(s) **IGI LG656413397**

Comments: This Laboratory Grown Diamond was created by Chemical Vapor Deposition (CVD) growth process. Type IIa



IGI

October 4, 2024
IGI Report No LG656413397
CUT CORNERED RECT. MODIFIED BRILLIANT
9.00 X 5.97 X 4.23 MM
1.90 CARAT
E
VS 2
70.9%
54%
Medium to Slightly Thick
Pointed
EXCELLENT
EXCELLENT
NONE
IGI LG656413397
Comments: This Laboratory Grown Diamond was created by Chemical Vapor Deposition (CVD) growth process. Type IIa

LABORATORY GROWN DIAMOND REPORT

October 4, 2024

IGI Report Number **LG656413397**

Description **LABORATORY GROWN DIAMOND**

Shape and Cutting Style **CUT CORNERED RECTANGULAR
MODIFIED BRILLIANT**

Measurements **9.00 X 5.97 X 4.23 MM**

GRADING RESULTS

Carat Weight **1.90 CARAT**

Color Grade **E**

Clarity Grade **VS 2**

ADDITIONAL GRADING INFORMATION

Polish **EXCELLENT**

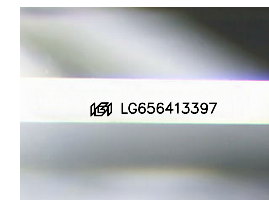
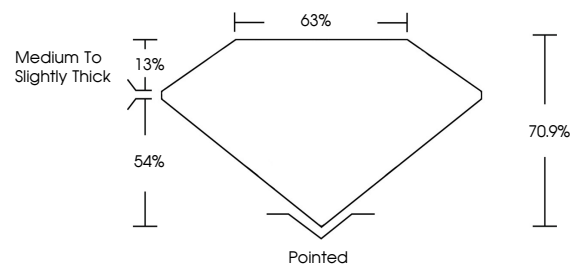
Symmetry **EXCELLENT**

Fluorescence **NONE**

Inscription(s) **IGI LG656413397**

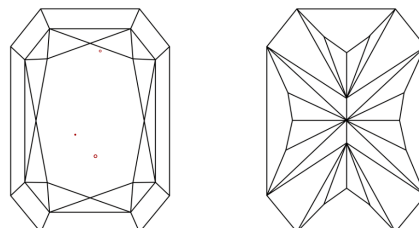
Comments: This Laboratory Grown Diamond was created by Chemical Vapor Deposition (CVD) growth process. Type IIa

PROPORTIONS



Sample Image Used

CLARITY CHARACTERISTICS



KEY TO SYMBOLS

Red symbols indicate internal characteristics.
Green symbols indicate external characteristics.

COLOR

D E F G H I J Faint Very Light Light

CLARITY

IF	VS 1-2	VS 1-2	SI 1-2	I 1-3
Internally Flawless	Very Very Slightly Included	Very Slightly Included	Slightly Included	Included

