



**ELECTRONIC COPY**

## LABORATORY GROWN DIAMOND REPORT

October 4, 2024	
IGI Report Number	LG655462825
Description	LABORATORY GROWN DIAMOND
Shape and Cutting Style	EMERALD CUT
Measurements	8.52 X 6.04 X 4.12 MM

## GRADING RESULTS

Carat Weight	2.12 CARATS
Color Grade	G
Clarity Grade	VS2

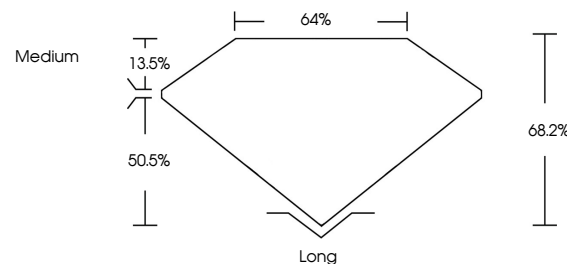
### ADDITIONAL GRADING INFORMATION

Polish	EXCELLENT
Symmetry	EXCELLENT
Fluorescence	NONE
Inscription(s)	151 LG655462825

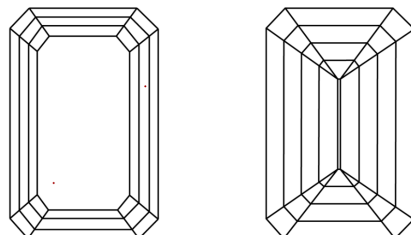
Comments: This Laboratory Grown Diamond was created by Chemical Vapor Deposition (CVD) growth process.  
Type IIa

LG655462825  
Report verification at [lgi.org](https://lgi.org)

## PROPORTIONS

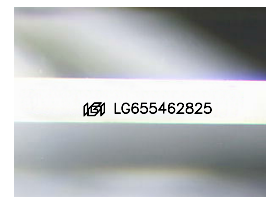


## CLARITY CHARACTERISTICS



### KEY TO SYMBOLS

Red symbols indicate internal characteristics.  
Green symbols indicate external characteristics.



Sample Image Used

**COLOR**

D E F G H I J Faint Very Light Light

## CLARITY

IF	VVS <sup>1-2</sup>	VS <sup>1-2</sup>	SI <sup>1-2</sup>	I <sup>1-3</sup>
Internally Flawless	Very Very Slightly Included	Very Slightly Included	Slightly Included	Included



© IGI 2020, International Gemological Institute

FD - 10 20

LABORATORY GROWN DIAMOND REPORT



October 4, 2024

IGI Report Number LG655462825

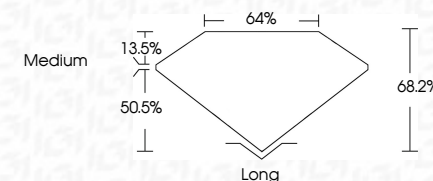
Description **LABORATORY GROWN DIAMOND**

Shape and Cutting Style **EMERALD CUT**

Measurements 8.52 X 6.04 X 4.12 MM

## GRADING RESULTS

Carat Weight **2.12 CARATS**

Color Grade **G**Clarity Grade **VVS 2**

### ADDITIONAL GRADING INFORMATION

Polish **EXCELLEN**Symmetry **EXCELLEN**

Fluorescence NONI

Inscription(s)  LG655462825

Comments: This Laboratory Grown Diamond was created by Chemical Vapor Deposition (CVD) growth process.  
Type IIa



October 4, 2024	GL Report No. LG4554/2825	212 CARATS	G	VVS 2	68.2%	64%	Medium	Long	EXCELLENT	EXCELLENT	NONE	#81 LG4554/2825
EMERALD CUT	Color Weight	Color Grade	Clarity Grade	Depth	Table	Grade		Quiet	Polish	Symmetry	Fluorescence	Inscriptions(s)
6.52 x 4.04 x 4.12 MM												

Comments:   
 Crown Diamond was created by Chemical Vapor Deposition (CVD) growth process.   
 Type IIa