



ELECTRONIC COPY

LABORATORY GROWN DIAMOND REPORT

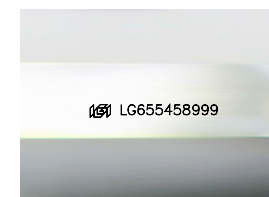
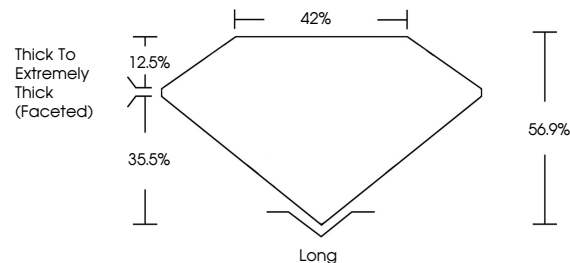
October 7, 2024  
IGI Report Number LG655458999  
Description LABORATORY GROWN DIAMOND  
Shape and Cutting Style FREEFORM STEP CUT  
Measurements 10.44 X 5.66 X 3.22 MM  
**GRADING RESULTS**  
Carat Weight 1.23 CARAT  
Color Grade F  
Clarity Grade VS 2

ADDITIONAL GRADING INFORMATION

Polish VERY GOOD  
Symmetry VERY GOOD  
Fluorescence NONE  
Inscription(s) IGI LG655458999

Comments: This Laboratory Grown Diamond was created by Chemical Vapor Deposition (CVD) growth process.  
Type IIa

PROPORTIONS



Sample Image Used

COLOR

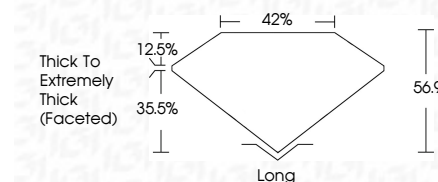
D	E	F	G	H	I	J	Faint	Very Light	Light
---	---	---	---	---	---	---	-------	------------	-------

CLARITY

IF	VS 1-2	VS 1-2	SI 1-2	I 1-3
Internally Flawless	Very Very Slightly Included	Very Slightly Included	Slightly Included	Included



October 7, 2024  
IGI Report Number LG655458999  
Description LABORATORY GROWN DIAMOND  
Shape and Cutting Style FREEFORM STEP CUT  
Measurements 10.44 X 5.66 X 3.22 MM  
**GRADING RESULTS**  
Carat Weight 1.23 CARAT  
Color Grade F  
Clarity Grade VS 2



ADDITIONAL GRADING INFORMATION

Polish VERY GOOD  
Symmetry VERY GOOD  
Fluorescence NONE  
Inscription(s) IGI LG655458999  
Comments: This Laboratory Grown Diamond was created by Chemical Vapor Deposition (CVD) growth process.  
Type IIa



IGI



October 7, 2024  
IGI Report No LG655458999  
FREEFORM STEP CUT  
10.44 X 5.66 X 3.22 MM  
1.23 CARAT  
Color Grade F  
Clarity Grade VS 2  
Depth 56.9%  
Table 42%  
Girdle Thick To Extremely Thick (Faceted)  
Culet Long  
Polish VERY GOOD  
Symmetry VERY GOOD  
Fluorescence NONE  
Inscription(s) IGI LG655458999  
Comments: This Laboratory Grown Diamond was created by Chemical Vapor Deposition (CVD) growth process.  
Type IIa