



ELECTRONIC COPY

LABORATORY GROWN DIAMOND REPORT

LG655457324
Report verification at igi.org

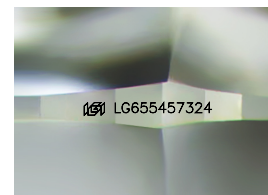
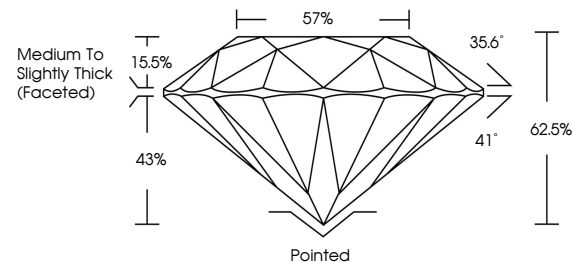
October 11, 2024	
IGI Report Number	LG655457324
Description	LABORATORY GROWN DIAMOND
Shape and Cutting Style	ROUND BRILLIANT
Measurements	8.87 - 8.89 X 5.55 MM
GRADING RESULTS	
Carat Weight	2.72 CARATS
Color Grade	FANCY VIVID BLUE
Clarity Grade	VVS 1
Cut Grade	IDEAL

ADDITIONAL GRADING INFORMATION

Polish	EXCELLENT
Symmetry	EXCELLENT
Fluorescence	NONE
Inscription(s)	151 LG655457324

Comments: This Laboratory Grown Diamond was created by High Pressure High Temperature (HPHT) growth process.
Indications of post-growth treatment.

PROPORTIONS



Sample Image Used

COLOR

D E F G H I J Faint Very Light Light

CLARITY

IF	VVS ¹⁻²	VS ¹⁻²	SI ¹⁻²	I ¹⁻³
Internally Flawless	Very Very Slightly Included	Very Slightly Included	Slightly Included	Included



© IGI 2020, International Gemological Institute

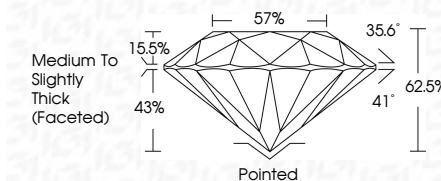
FD - 10 20

www.igi.org

LABORATORY GROWN DIAMOND REPORT



October 11, 2024	
IGI Report Number	LG655457324
Description	LABORATORY GROWN DIAMOND
Shape and Cutting Style	ROUND BRILLIANT
Measurements	8.87 - 8.89 X 5.55 MM
GRADING RESULTS	
Carat Weight	2.72 CARATS
Color Grade	FANCY VIVID BLUE
Clarity Grade	VVS 1
Cut Grade	IDEAL



ADDITIONAL GRADING INFORMATION

Polish	EXCELLENT
Symmetry	EXCELLENT
Fluorescence	NONE
Inscription(s)	 LG655457324

Comments: This Laboratory Grown Diamond was created by High Pressure High Temperature (HPHT) growth process.
Indications of post-growth treatment.



October 11, 2024
GI Report No LG655457324
ROUND BRILLIANT

3.87 - 8.89 X 5.55 MM
Carat Weight 2.72 CARATS
Color Grade FANCY VIVID BLUE

Carfly Grade	WS 1
Cut Grade	IDEAL
Depth	62.6%
Table	57%
Grille	Medium To Slightly Thick (5mm to 7mm)

Culet	Painted
Polish	EXCELLENT
Symmetry	EXCELLENT
Fluorescence	NONE
Identification (c)	4591 G455457394

Comments:
This Laboratory Grown Diamond was created by High Pressure High Temperature (HPHT) growth process. All portions of most stones are homogenous.