



ELECTRONIC COPY

LABORATORY GROWN DIAMOND REPORT

October 13, 2024	
IGI Report Number	LG655437190
Description	LABORATORY GROWN DIAMOND
Shape and Cutting Style	CUT CORNERED RECTANGULAR MODIFIED BRILLIANT
Measurements	8.19 X 5.69 X 3.79 MM

GRADING RESULTS

Carat Weight	1.51 CARAT
Color Grade	E
Clarity Grade	VS2

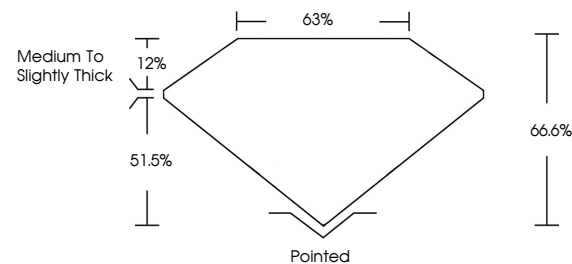
ADDITIONAL GRADING INFORMATION

Polish	EXCELLENT
Symmetry	VERY GOOD
Fluorescence	NONE
Inscription(s)	 LG655437190

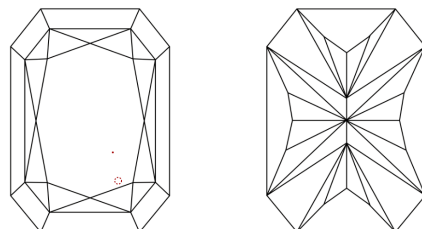
Comments: This Laboratory Grown Diamond was created by Chemical Vapor Deposition (CVD) growth process.
Type IIa

LG655437190
Report verification at lgi.org

PROPORTIONS

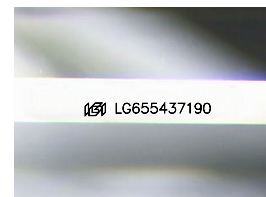


CLARITY CHARACTERISTICS



KEY TO SYMBOLS

Red symbols indicate internal characteristics.
Green symbols indicate external characteristics.



Sample Image Used

COLOR

D E F G H I J Faint Very Light Light

CLARITY

IF	VVS ¹⁻²	VS ¹⁻²	SI ¹⁻²	I ¹⁻³
Internally Flawless	Very Very Slightly Included	Very Slightly Included	Slightly Included	Included



© IGI 2020, International Gemological Institute

FD - 10 20

www.igi.org

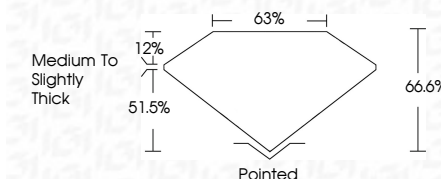
LABORATORY GROWN DIAMOND REPORT



October 13, 2024	
IGI Report Number	LG655437190
Description	LABORATORY GROWN DIAMOND
Shape and Cutting Style	CUT CORNERED RECTANGULAR MODIFIED BRILLIANT
Measurements	8.19 X 5.69 X 3.79 MM

GRADING RESULTS

Carat Weight	1.51 CARAT
Color Grade	E
Clarity Grade	VVS2



ADDITIONAL GRADING INFORMATION

Polish	EXCELLENT
Symmetry	VERY GOOD
Fluorescence	NONE
Inscription(s)	 LG-655437190

Comments: This Laboratory Grown Diamond was created by Chemical Vapor Deposition (CVD) growth process.
Type IIa



October 13, 2024	GI Report No. LG455437100	
Customer	GT CORP/RENT RECT, MODIFIED BRILLIANT	
Carat Weight	1.19 X 1.19 X 6.09 X 3.79 MM	1.51 CARAT
Color Grade		E
Clarity Grade		VVS 2
Depth		66.6%
Table		63%
Girdle		Medium to slightly Thick
Culet		Patented
Polish		EXCELLENT
Symmetry		VERY GOOD
Fluorescence		NONE
Annotations		see LG455437100

Comments:
This Laboratory Grown Diamond was created by Chemical Vapor Deposition (CVD) growth process.