



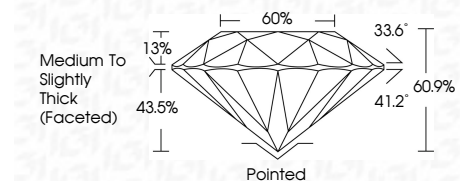
ELECTRONIC COPY

LG655435485
Report verification at igi.org



October 26, 2024
IGI Report Number **LG655435485**
Description **LABORATORY GROWN DIAMOND**
Shape and Cutting Style **ROUND BRILLIANT**
Measurements **7.34 - 7.37 X 4.48 MM**

GRADING RESULTS
Carat Weight **1.50 CARAT**
Color Grade **FANCY VIVID PINK**
Clarity Grade **VVS 2**
Cut Grade **IDEAL**



ADDITIONAL GRADING INFORMATION
Polish **EXCELLENT**
Symmetry **EXCELLENT**
Fluorescence **STRONG**
Inscription(s) **IGI LG655435485**
Comments: This Laboratory Grown Diamond was created by Chemical Vapor Deposition (CVD) growth process. Indications of post-growth treatment.



October 26, 2024
IGI Report No. LG655435485
ROUND BRILLIANT
1.50 CARAT
FANCY VIVID PINK
VVS 2
IDEAL
60.9%
Medium To Slightly Thick (Faceted)
Pointed
EXCELLENT
EXCELLENT
STRONG
IGI LG655435485
Comments: This Laboratory Grown Diamond was created by Chemical Vapor Deposition (CVD) growth process. Indications of post-growth treatment.

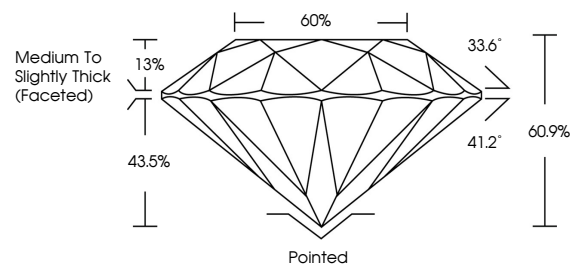
October 26, 2024
IGI Report Number **LG655435485**
Description **LABORATORY GROWN DIAMOND**
Shape and Cutting Style **ROUND BRILLIANT**
Measurements **7.34 - 7.37 X 4.48 MM**

GRADING RESULTS
Carat Weight **1.50 CARAT**
Color Grade **FANCY VIVID PINK**
Clarity Grade **VVS 2**
Cut Grade **IDEAL**

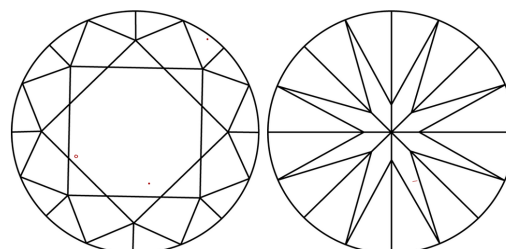
ADDITIONAL GRADING INFORMATION
Polish **EXCELLENT**
Symmetry **EXCELLENT**
Fluorescence **STRONG**
Inscription(s) **IGI LG655435485**

Comments: This Laboratory Grown Diamond was created by Chemical Vapor Deposition (CVD) growth process. Indications of post-growth treatment.

PROPORTIONS

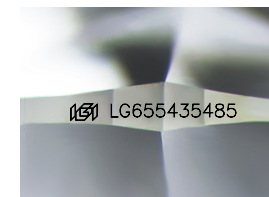


CLARITY CHARACTERISTICS



KEY TO SYMBOLS

Red symbols indicate internal characteristics.
Green symbols indicate external characteristics.



Sample Image Used

COLOR

D E F G H I J Faint Very Light Light

CLARITY

IF WS¹⁻² VS¹⁻² SI¹⁻² I¹⁻³

Internally Flawless Very Very Slightly Included Very Slightly Included Slightly Included Included

