



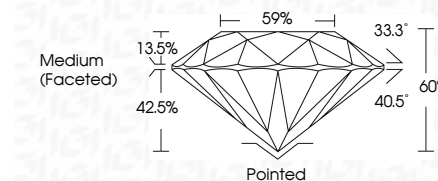
**ELECTRONIC COPY**

LG655435458  
Report verification at [igi.org](http://igi.org)



October 26, 2024  
IGI Report Number **LG655435458**  
Description **LABORATORY GROWN DIAMOND**  
Shape and Cutting Style **ROUND BRILLIANT**  
Measurements **8.13 - 8.19 X 4.90 MM**

**GRADING RESULTS**  
Carat Weight **2.00 CARATS**  
Color Grade **FANCY VIVID PINK**  
Clarity Grade **VS 1**  
Cut Grade **IDEAL**



**ADDITIONAL GRADING INFORMATION**  
Polish **EXCELLENT**  
Symmetry **EXCELLENT**  
Fluorescence **STRONG**  
Inscription(s) **IGI LG655435458**  
Comments: This Laboratory Grown Diamond was created by Chemical Vapor Deposition (CVD) growth process. Indications of post-growth treatment.



October 26, 2024  
IGI Report No **LG655435458**  
**ROUND BRILLIANT**  
**8.13 - 8.19 X 4.90 MM**  
Carat Weight **2.00 CARATS**  
Color Grade **FANCY VIVID PINK**  
Clarity Grade **VS 1**  
Depth **IDEAL**  
Table **60%**  
Girdle **69%**  
Medium (Faceted)  
Culet **Pointed**  
Polish **EXCELLENT**  
Symmetry **EXCELLENT**  
Fluorescence **STRONG**  
Inscription(s) **IGI LG655435458**  
Comments: This Laboratory Grown Diamond was created by Chemical Vapor Deposition (CVD) growth process. Indications of post-growth treatment.

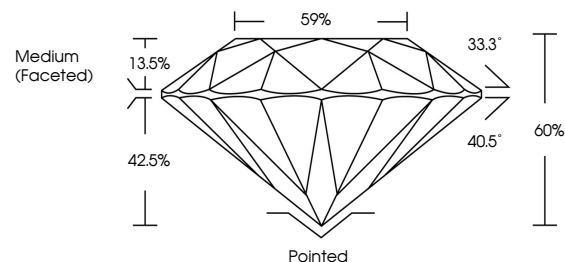
October 26, 2024  
IGI Report Number **LG655435458**  
Description **LABORATORY GROWN DIAMOND**  
Shape and Cutting Style **ROUND BRILLIANT**  
Measurements **8.13 - 8.19 X 4.90 MM**

**GRADING RESULTS**  
Carat Weight **2.00 CARATS**  
Color Grade **FANCY VIVID PINK**  
Clarity Grade **VS 1**  
Cut Grade **IDEAL**

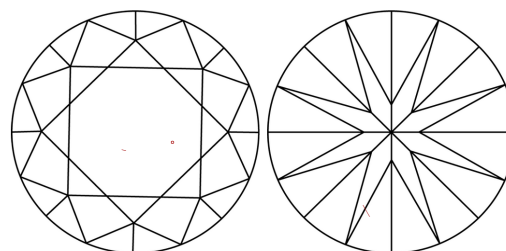
**ADDITIONAL GRADING INFORMATION**  
Polish **EXCELLENT**  
Symmetry **EXCELLENT**  
Fluorescence **STRONG**  
Inscription(s) **IGI LG655435458**

Comments: This Laboratory Grown Diamond was created by Chemical Vapor Deposition (CVD) growth process. Indications of post-growth treatment.

**PROPORTIONS**

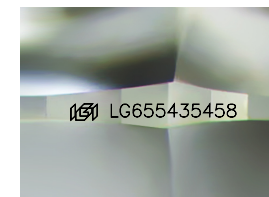


**CLARITY CHARACTERISTICS**



**KEY TO SYMBOLS**

Red symbols indicate internal characteristics.  
Green symbols indicate external characteristics.



Sample Image Used

**COLOR**

D E F G H I J Faint Very Light Light

**CLARITY**

IF VS<sup>1-2</sup> VS<sup>1-2</sup> SI<sup>1-2</sup> I<sup>1-3</sup>

Internally Flawless Very Very Slightly Included Very Slightly Included Slightly Included Included

