



INTERNATIONAL GEMOLOGICAL INSTITUTE

ELECTRONIC COPY



October 11, 2024

IGI Report Number LG655431495

PRINCESS CUT

LABORATORY GROWN DIAMOND

5.45 X 5.27 X 3.63 MM

Carat Weight 0.92 CARAT

Color Grade F

Clarity Grade VVS 2

Polish EXCELLENT

Symmetry EXCELLENT

Fluorescence NONE

Inscription(s) IGI LG655431495

Comments: This Laboratory Grown Diamond was created by Chemical Vapor Deposition (CVD) growth process. Type IIa

LABORATORY GROWN DIAMOND REPORT

October 11, 2024

IGI Report Number

LG655431495

Description

LABORATORY GROWN DIAMOND

Shape and Cutting Style

PRINCESS CUT

Measurements

5.45 X 5.27 X 3.63 MM

GRADING RESULTS

Carat Weight

0.92 CARAT

Color Grade

F

Clarity Grade

VVS 2

ADDITIONAL GRADING INFORMATION

Polish

EXCELLENT

Symmetry

EXCELLENT

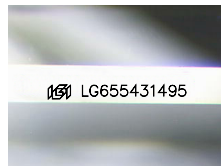
Fluorescence

NONE

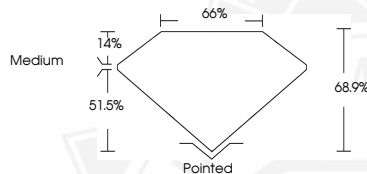
Inscription(s)

IGI LG655431495

Comments: This Laboratory Grown Diamond was created by Chemical Vapor Deposition (CVD) growth process. Type IIa



Sample Image Used



October 11, 2024

IGI Report Number LG655431495

PRINCESS CUT

LABORATORY GROWN DIAMOND

5.45 X 5.27 X 3.63 MM

Carat Weight 0.92 CARAT

Color Grade F

Clarity Grade VVS 2

Polish EXCELLENT

Symmetry EXCELLENT

Fluorescence NONE

Inscription(s) IGI LG655431495

Comments: This Laboratory Grown Diamond was created by Chemical Vapor Deposition (CVD) growth process. Type IIa



THIS DOCUMENT WAS PRODUCED WITH THE FOLLOWING SECURITY MEASURES: SPECIAL DOCUMENT PAPER, INK SCREENS, WATERMARK, BACKGROUND DESIGN, HOLOGRAM AND OTHER SECURITY FEATURES NOT LISTED AND DO EXCEED DOCUMENT SECURITY INDUSTRY GUIDELINES.

For terms & conditions and to verify this report, please visit www.igi.org