



# INTERNATIONAL GEMOLOGICAL INSTITUTE

## LABORATORY GROWN DIAMOND REPORT

October 7, 2024  
IGI Report Number **LG655425602**  
Description **LABORATORY GROWN DIAMOND**  
Shape and Cutting Style **ROUND BRILLIANT**  
Measurements **4.74 - 4.78 X 2.97 MM**

### GRADING RESULTS

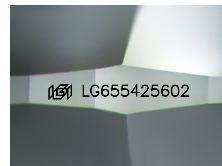
Carat Weight **0.42 CARAT**  
Color Grade **FANCY VIVID BLUE**  
Clarity Grade **VVS 2**  
Cut Grade **EXCELLENT**

### ADDITIONAL GRADING INFORMATION

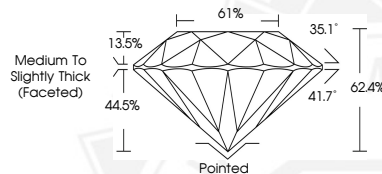
Polish **VERY GOOD**  
Symmetry **VERY GOOD**  
Fluorescence **NONE**  
Inscription(s) **IGI LG655425602**

Comments: This Laboratory Grown Diamond was created by Chemical Vapor Deposition (CVD) growth process. Indications of post-growth treatment.

ELECTRONIC COPY



Sample Image Used



October 7, 2024  
IGI Report Number **LG655425602**  
**ROUND BRILLIANT**  
**LABORATORY GROWN DIAMOND**  
**4.74 - 4.78 X 2.97 MM**  
Carat Weight **0.42 CARAT**  
Color Grade **FANCY VIVID BLUE**  
Clarity Grade **VVS 2**  
Cut Grade **EXCELLENT**  
Polish **VERY GOOD**  
Symmetry **VERY GOOD**  
Fluorescence **NONE**  
Inscription(s) **IGI LG655425602**

Comments: This Laboratory Grown Diamond was created by Chemical Vapor Deposition (CVD) growth process. Indications of post-growth treatment.



October 7, 2024  
IGI Report Number **LG655425602**  
**ROUND BRILLIANT**  
**LABORATORY GROWN DIAMOND**  
**4.74 - 4.78 X 2.97 MM**  
Carat Weight **0.42 CARAT**  
Color Grade **FANCY VIVID BLUE**  
Clarity Grade **VVS 2**  
Cut Grade **EXCELLENT**  
Polish **VERY GOOD**  
Symmetry **VERY GOOD**  
Fluorescence **NONE**  
Inscription(s) **IGI LG655425602**

Comments: This Laboratory Grown Diamond was created by Chemical Vapor Deposition (CVD) growth process. Indications of post-growth treatment.



THIS DOCUMENT WAS PRODUCED WITH THE FOLLOWING SECURITY MEASURES: SPECIAL DOCUMENT PAPER, INK SCREENS, WATERMARK, BACKGROUND DESIGNS, HOLOGRAM AND OTHER SECURITY FEATURES NOT LISTED AND DO EXCEED DOCUMENT SECURITY INDUSTRY GUIDELINES.

For terms & conditions and to verify this report, please visit [www.igi.org](http://www.igi.org)