



INTERNATIONAL
GEMOLOGICAL
INSTITUTE

ELECTRONIC COPY

LABORATORY GROWN DIAMOND REPORT

September 30, 2024
IGI Report Number LG655424558
Description LABORATORY GROWN DIAMOND
Shape and Cutting Style ROUND BRILLIANT
Measurements 7.74 - 7.77 x 4.74 mm

GRADING RESULTS

Carat Weight 1.74 CARAT
Color Grade E
Clarity Grade VVS 2
Cut Grade IDEAL

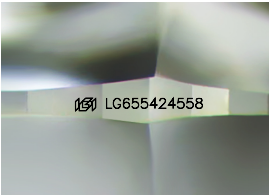
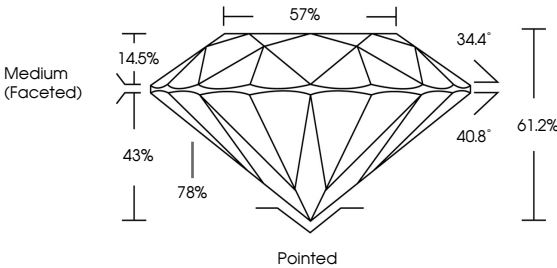
ADDITIONAL GRADING INFORMATION

Polish EXCELLENT
Symmetry EXCELLENT
Fluorescence NONE
Inscription(s) IGI LG655424558

Comments: HEARTS & ARROWS
This Laboratory Grown Diamond was created by
Chemical Vapor Deposition (CVD) growth process.
Type IIa

LG655424558
Report verification at igi.org

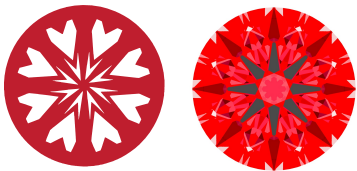
PROPORTIONS



Sample Image Used

LIGHT PERFORMANCE REPORT

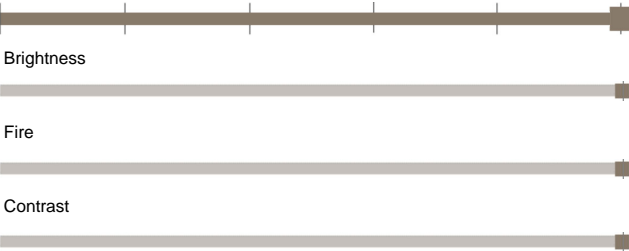
Light Performance Grade: Exceptional



Ideal-Scope representation

Low Moderate High Superior Exceptional

Light Performance



COLOR

D E F G H I J Faint Very Light Light

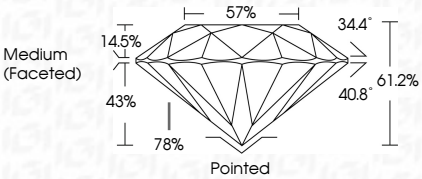
CLARITY

IF VVS 1 - 2 VS 1 - 2 SI 1 - 2 I 1 - 3

Internally Flawless Very Very Slightly Included Very Slightly Included Slightly Included Included



September 30, 2024
IGI Report Number LG655424558
Description LABORATORY GROWN DIAMOND
Shape and Cutting Style ROUND BRILLIANT
Measurements 7.74 - 7.77 X 4.74 MM
GRADING RESULTS
Carat Weight 1.74 CARAT
Color Grade E
Clarity Grade VVS 2
Cut Grade IDEAL



ADDITIONAL GRADING INFORMATION

Polish EXCELLENT
Symmetry EXCELLENT
Fluorescence NONE
Inscription(s) IGI LG655424558

Comments: HEARTS & ARROWS
This Laboratory Grown Diamond was created by
Chemical Vapor Deposition (CVD) growth process.
Type IIa



IGI

September 30, 2024
IGI Report No. LG655424558
ROUND BRILLIANT
7.74 - 7.77 X 4.74 MM
Carat Weight 1.74 CARAT
Color Grade E
Clarity Grade VVS 2
Cut Grade IDEAL
Depth 61.2%
Table 78%
Girdle Medium (Faceted)
Culet Pointed
Polish EXCELLENT
Symmetry EXCELLENT
Fluorescence NONE
Inscription(s) IGI LG655424558
Comments: HEARTS & ARROWS
This Laboratory Grown Diamond was created by Chemical Vapor Deposition (CVD) growth process.
Type IIa