



ELECTRONIC COPY

LABORATORY GROWN DIAMOND REPORT

October 8, 2024	
IGI Report Number	LG655414697
Description	LABORATORY GROWN DIAMOND
Shape and Cutting Style	PRINCESS CUT
Measurements	8.64 X 8.64 X 6.67 MM

GRADING RESULTS

Carat Weight	4.52 CARATS
Color Grade	FANCY VIVID BLUE
Clarity Grade	VS 2

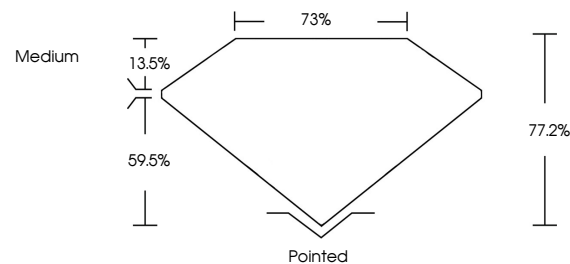
ADDITIONAL GRADING INFORMATION

Polish	EXCELLENT
Symmetry	EXCELLENT
Fluorescence	NONE
Inscription(s)	151 LG655414697

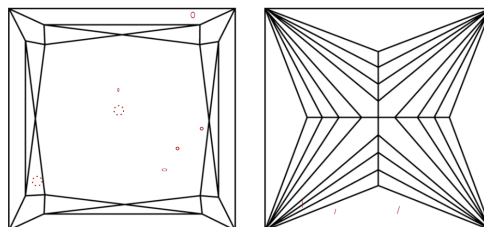
Comments: This Laboratory Grown Diamond was created by Chemical Vapor Deposition (CVD) growth process.
Indications of post-growth treatment.

LG655414697
Report verification at igi.org

PROPORTIONS

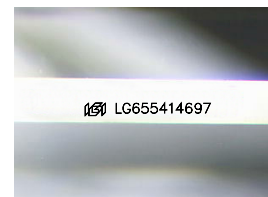


CLARITY CHARACTERISTICS



KEY TO SYMBOLS

Red symbols indicate internal characteristics.
Green symbols indicate external characteristics.



Sample Image Used

COLOR

D E F G H I J Faint Very Light Light

CLARITY

IF	VVS ¹⁻²	VS ¹⁻²	SI ¹⁻²	I ¹⁻³
Internally Flawless	Very Very Slightly Included	Very Slightly Included	Slightly Included	Included



© IGI 2020, International Gemological Institute

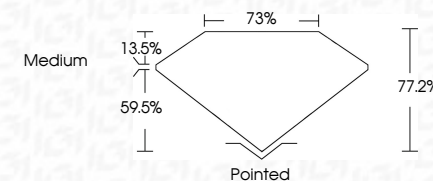
FD - 10 20

www.igi.org

LABORATORY GROWN DIAMOND REPORT



October 8, 2024	
IGI Report Number	LG655414697
Description	LABORATORY GROWN DIAMOND
Shape and Cutting Style	PRINCESS CUT
Measurements	8.64 X 8.64 X 6.67 MM
GRADING RESULTS	
Carat Weight	4.52 CARATS
Color Grade	FANCY VIVID BLUE
Clarity Grade	VS 2



ADDITIONAL GRADING INFORMATION

Polish	EXCELLENT
Symmetry	EXCELLENT
Fluorescence	NONE
Inscription(s)	 LG655414697

Comments: This Laboratory Grown Diamond was created by Chemical Vapor Deposition (CVD) growth process.
Indications of post-growth treatment.



October 8, 2024
 IGI Report No LG655414697
 PRINCESS CIT

3.64 X 8.64 X 0.67 MM	Carat Weight	4.82 CARATS
	Color Grade	FANCY VIVID BLUE
	Clarity Grade	VS 2
	Depth	77.2%
	Table	73%
	Girdle	Medium
	Culet	Pointed
	Polish	EXCELLENT
	Symmetry	EXCELLENT
	Fluorescence	NONE
	Measurements (mm)	8.64 8.64 0.67

Comments:
This Laboratory Grown Diamond was created by Chemical Vapor Deposition (CVD) growth process.