



ELECTRONIC COPY

LABORATORY GROWN DIAMOND REPORT

October 3, 2024
IGI Report Number LG654492965
Description LABORATORY GROWN DIAMOND
Shape and Cutting Style EMERALD CUT
Measurements 12.56 X 8.64 X 5.61 MM

GRADING RESULTS

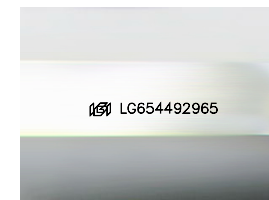
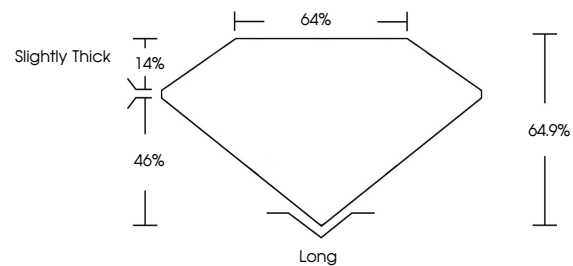
Carat Weight 6.72 CARATS
Color Grade E
Clarity Grade VVS 1

ADDITIONAL GRADING INFORMATION

Polish EXCELLENT
Symmetry EXCELLENT
Fluorescence NONE
Inscription(s) IGI LG654492965

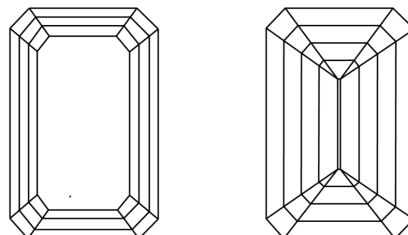
Comments: This Laboratory Grown Diamond was created by Chemical Vapor Deposition (CVD) growth process.
Type IIa

PROPORTIONS



Sample Image Used

CLARITY CHARACTERISTICS



KEY TO SYMBOLS

Red symbols indicate internal characteristics.
Green symbols indicate external characteristics.

COLOR

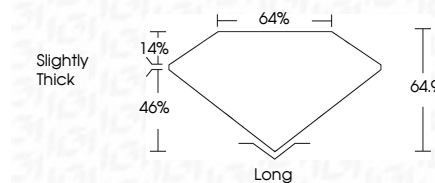
D E F G H I J Faint Very Light Light

CLARITY

IF	VS ¹⁻²	VS ¹⁻²	SI ¹⁻²	I ¹⁻³
Internally Flawless	Very Very Slightly Included	Very Slightly Included	Slightly Included	Included



October 3, 2024
IGI Report Number LG654492965
Description LABORATORY GROWN DIAMOND
Shape and Cutting Style EMERALD CUT
Measurements 12.56 X 8.64 X 5.61 MM
GRADING RESULTS
Carat Weight 6.72 CARATS
Color Grade E
Clarity Grade VVS 1



ADDITIONAL GRADING INFORMATION

Polish EXCELLENT
Symmetry EXCELLENT
Fluorescence NONE
Inscription(s) IGI LG654492965
Comments: This Laboratory Grown Diamond was created by Chemical Vapor Deposition (CVD) growth process.
Type IIa



IGI



October 3, 2024
IGI Report No LG654492965
EMERALD CUT
12.56 X 8.64 X 5.61 MM
6.72 CARATS
E
Color Grade
VVS 1
46%
46%
Slightly Thick
Long
EXCELLENT
EXCELLENT
NONE
IGI LG654492965

Comments: This Laboratory Grown Diamond was created by Chemical Vapor Deposition (CVD) growth process.
Type IIa