



ELECTRONIC COPY

LG654471758
Report verification at igi.org



September 25, 2024

IGI Report Number **LG654471758**

Description **LABORATORY GROWN DIAMOND**

Shape and Cutting Style **ROUND MIXED CUT**

Measurements **8.70 - 8.77 X 5.55 MM**

GRADING RESULTS

Carat Weight **3.02 CARATS**

Color Grade **F**

Clarity Grade **VVS 2**

September 25, 2024
IGI Report Number **LG654471758**
Description **LABORATORY GROWN DIAMOND**
Shape and Cutting Style **ROUND MIXED CUT**
Measurements **8.70 - 8.77 X 5.55 MM**

GRADING RESULTS

Carat Weight **3.02 CARATS**

Color Grade **F**

Clarity Grade **VVS 2**

ADDITIONAL GRADING INFORMATION

Polish **EXCELLENT**

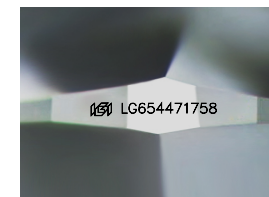
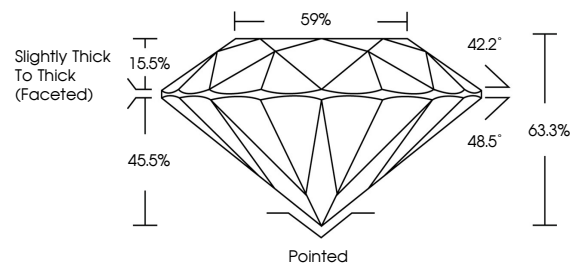
Symmetry **EXCELLENT**

Fluorescence **NONE**

Inscription(s) **LG654471758**

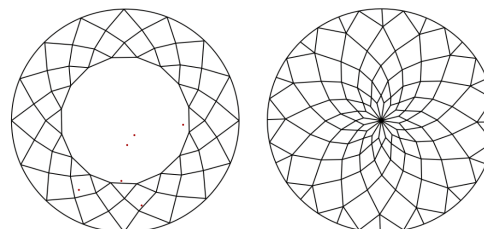
Comments: This Laboratory Grown Diamond was created by Chemical Vapor Deposition (CVD) growth process.
Type IIa

PROPORTIONS



Sample Image Used

CLARITY CHARACTERISTICS



KEY TO SYMBOLS

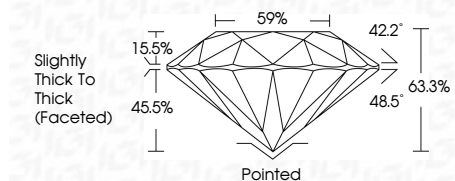
Red symbols indicate internal characteristics.
Green symbols indicate external characteristics.

COLOR

D E F G H I J Faint Very Light Light

CLARITY

IF	VS ¹⁻²	VS ¹⁻²	SI ¹⁻²	I ¹⁻³
Internally Flawless	Very Very Slightly Included	Very Slightly Included	Slightly Included	Included



ADDITIONAL GRADING INFORMATION

Polish **EXCELLENT**

Symmetry **EXCELLENT**

Fluorescence **NONE**

Inscription(s) **LG654471758**

Comments: This Laboratory Grown Diamond was created by Chemical Vapor Deposition (CVD) growth process.
Type IIa



IGI



September 25, 2024
IGI Report No LG654471758
ROUND MIXED CUT
8.70 - 8.77 X 5.55 MM
3.02 CARATS
F
Carat Weight
Color Grade
Clarity Grade
Depth
Table
Girdle
Slightly Thick To Thick (Faceted)
Pointed
Polish
Symmetry
Fluorescence
Inscription(s)
EXCELLENT
EXCELLENT
NONE
 LG654471758
Comments: This Laboratory Grown Diamond was created by Chemical Vapor Deposition (CVD) growth process.
Type IIa