

INTERNATIONAL
GEMOLOGICAL
INSTITUTE

ELECTRONIC COPY

LABORATORY GROWN DIAMOND REPORT

September 27, 2024

IGI Report Number

LG654433772

Description

LABORATORY GROWN DIAMOND

Shape and Cutting Style

CUT CORNERED RECTANGULAR MODIFIED BRILLIANT

Measurements

8.74 X 6.33 X 4.31 MM

GRADING RESULTS

Carat Weight

2.04 CARATS

Color Grade

D

Clarity Grade

VS 1

ADDITIONAL GRADING INFORMATION

Polish

EXCELLENT


Symmetry

EXCELLENT

Fluorescence

NONE

Inscription(s)

 LG654433772

Comments: This Laboratory Grown Diamond was created by Chemical Vapor Deposition (CVD) growth process.
Type IIa

LABORATORY GROWN DIAMOND REPORT

September 27, 2024

IGI Report Number

LG654433772

Description

LABORATORY GROWN DIAMOND

Shape and Cutting Style

CUT CORNERED RECTANGULAR MODIFIED BRILLIANT

Measurements

8.74 X 6.33 X 4.31 MM

GRADING RESULTS

Carat Weight

2.04 CARATS

Color Grade

D

Clarity Grade

VS 1

ADDITIONAL GRADING INFORMATION

Polish

EXCELLENT

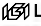
Symmetry

EXCELLENT

Fluorescence

NONE

Inscription(s)

 LG654433772

Comments: This Laboratory Grown Diamond was created by Chemical Vapor Deposition (CVD) growth process.
Type IIa

LABORATORY GROWN DIAMOND REPORT

September 27, 2024

IGI Report No LG654433772

CUT CORNERED RECT. MODIFIED BRILLIANT

8.74 X 6.33 X 4.31 MM

Carat Weight

2.04 CARATS

Color Grade

D

Clarity Grade

VS 1

Depth

68.1%

Table

65%

Girdle

Slightly Thick

Culet

Pointed

Polish

EXCELLENT

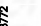
Symmetry

EXCELLENT

Fluorescence

NONE

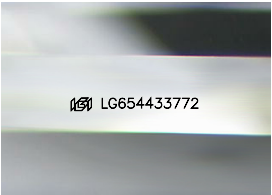
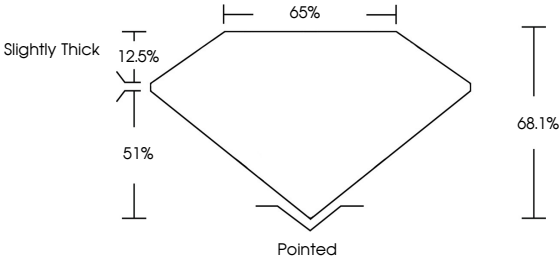
Inscription(s)

 LG654433772

Comments: The Laboratory Grown Diamond was created by Chemical Vapor Deposition (CVD) growth process.
Type IIa

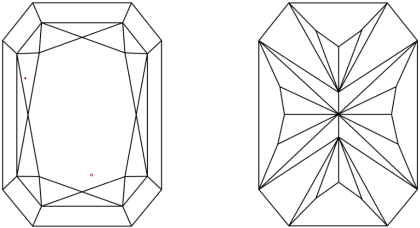
LG654433772
Report verification at [igi.org](https://www.igi.org)

PROPORTIONS



Sample Image Used

CLARITY CHARACTERISTICS



KEY TO SYMBOLS

Red symbols indicate internal characteristics.
Green symbols indicate external characteristics.

COLOR

D E F G H I J Faint Very Light Light

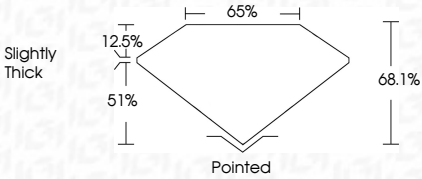
CLARITY

IF	VVS ¹⁻²	VS ¹⁻²	SI ¹⁻²	I ¹⁻³
Internally Flawless	Very Very Slightly Included	Very Slightly Included	Slightly Included	Included



September 27, 2024
IGI Report Number
Description
Shape and Cutting Style
Measurements
GRADING RESULTS
Carat Weight
Color Grade
Clarity Grade

LG654433772
LABORATORY GROWN DIAMOND
CUT CORNERED RECTANGULAR MODIFIED BRILLIANT
8.74 X 6.33 X 4.31 MM
2.04 CARATS
D
VS 1



ADDITIONAL GRADING INFORMATION

Polish
Symmetry
Fluorescence
Inscription(s)
Comments: This Laboratory Grown Diamond was created by Chemical Vapor Deposition (CVD) growth process.
Type IIa

EXCELLENT
EXCELLENT
NONE
 LG654433772



IGI

September 27, 2024
IGI Report No LG654433772
CUT CORNERED RECT. MODIFIED BRILLIANT
8.74 X 6.33 X 4.31 MM
Carat Weight
Color Grade
Clarity Grade
Depth
Table
Girdle
Culet
Polish
Symmetry
Fluorescence
Inscription(s)

2.04 CARATS
D
VS 1
68.1%
65%
Slightly Thick
Pointed
EXCELLENT
EXCELLENT
NONE
 LG654433772

Comments: The Laboratory Grown Diamond was created by Chemical Vapor Deposition (CVD) growth process.
Type IIa