



ELECTRONIC COPY

LG654418361
Report verification at igi.org



October 2, 2024
IGI Report Number **LG654418361**
Description **LABORATORY GROWN DIAMOND**
Shape and Cutting Style **SQUARE CUSHION MODIFIED BRILLIANT**
Measurements **8.67 X 8.49 X 5.61 MM**
GRADING RESULTS
Carat Weight **4.03 CARATS**
Color Grade **FANCY VIVID ORANGY PINK**
Clarity Grade **VVS 2**

LABORATORY GROWN DIAMOND REPORT

October 2, 2024
IGI Report Number **LG654418361**
Description **LABORATORY GROWN DIAMOND**
Shape and Cutting Style **SQUARE CUSHION MODIFIED BRILLIANT**
Measurements **8.67 X 8.49 X 5.61 MM**

GRADING RESULTS

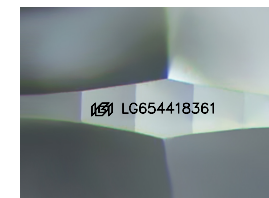
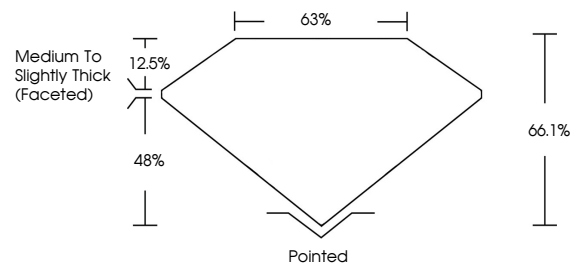
Carat Weight **4.03 CARATS**
Color Grade **FANCY VIVID ORANGY PINK**
Clarity Grade **VVS 2**

ADDITIONAL GRADING INFORMATION

Polish **EXCELLENT**
Symmetry **EXCELLENT**
Fluorescence **SLIGHT**
Inscription(s) **LG654418361**

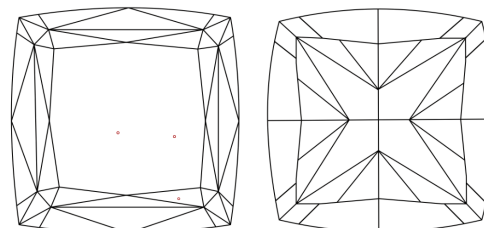
Comments: This Laboratory Grown Diamond was created by Chemical Vapor Deposition (CVD) growth process.
Indications of post-growth treatment.

PROPORTIONS



Sample Image Used

CLARITY CHARACTERISTICS



KEY TO SYMBOLS

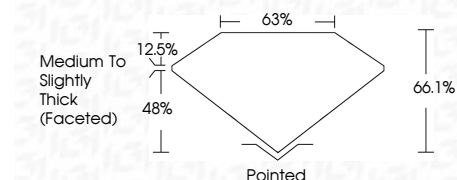
Red symbols indicate internal characteristics.
Green symbols indicate external characteristics.

COLOR

D E F G H I J Faint Very Light Light

CLARITY

IF	VS ¹⁻²	VS ¹⁻²	SI ¹⁻²	I ¹⁻³
Internally Flawless	Very Very Slightly Included	Very Slightly Included	Slightly Included	Included



ADDITIONAL GRADING INFORMATION

Polish **EXCELLENT**
Symmetry **EXCELLENT**
Fluorescence **SLIGHT**
Inscription(s) **LG654418361**
Comments: This Laboratory Grown Diamond was created by Chemical Vapor Deposition (CVD) growth process.
Indications of post-growth treatment.



October 2, 2024
IGI Report No LG654418361
SQUARE CUSHION MODIFIED BRILLIANT
4.03 CARATS
Carat Weight
Color Grade **FANCY VIVID ORANGY PINK**
Clarity Grade **VVS 2**
Depth **66.1%**
Table **63%**
Medium to Slightly Thick (Faceted)
Culet Pointed
Polish **EXCELLENT**
Symmetry **EXCELLENT**
Fluorescence **SLIGHT**
Inscription(s) LG654418361
Comments: This Laboratory Grown Diamond was created by Chemical Vapor Deposition (CVD) growth process.
Indications of post-growth treatment.