



ELECTRONIC COPY

LABORATORY GROWN DIAMOND REPORT

September 27, 2024
IGI Report Number LG653451190
Description LABORATORY GROWN DIAMOND
Shape and Cutting Style EMERALD CUT
Measurements 12.72 X 8.51 X 5.95 MM

GRADING RESULTS

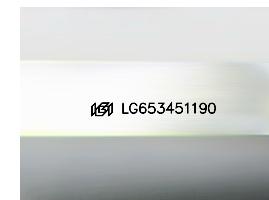
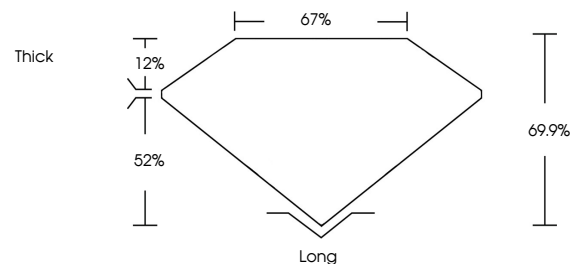
Carat Weight 6.60 CARATS
Color Grade G
Clarity Grade VS 1

ADDITIONAL GRADING INFORMATION

Polish EXCELLENT
Symmetry EXCELLENT
Fluorescence NONE
Inscription(s) IGI LG653451190

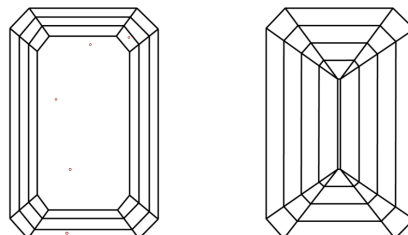
Comments: This Laboratory Grown Diamond was created by Chemical Vapor Deposition (CVD) growth process.
Type IIa

PROPORTIONS



Sample Image Used

CLARITY CHARACTERISTICS



KEY TO SYMBOLS

Red symbols indicate internal characteristics.
Green symbols indicate external characteristics.

COLOR

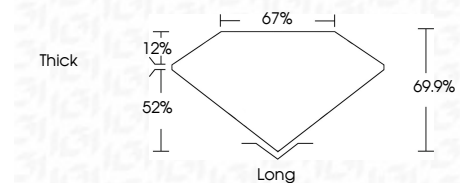
D E F G H I J Faint Very Light Light

CLARITY

IF WVS 1-2 VS 1-2 SI 1-2 I 1-3
Internally Flawless Very Very Slightly Included Very Slightly Included Slightly Included Included



September 27, 2024
IGI Report Number LG653451190
Description LABORATORY GROWN DIAMOND
Shape and Cutting Style EMERALD CUT
Measurements 12.72 X 8.51 X 5.95 MM
GRADING RESULTS
Carat Weight 6.60 CARATS
Color Grade G
Clarity Grade VS 1



ADDITIONAL GRADING INFORMATION

Polish EXCELLENT
Symmetry EXCELLENT
Fluorescence NONE
Inscription(s) IGI LG653451190
Comments: This Laboratory Grown Diamond was created by Chemical Vapor Deposition (CVD) growth process.
Type IIa



IGI



September 27, 2024
IGI Report No. LG653451190
EMERALD CUT
6.60 CARATS
Color Grade G
Clarity Grade VS 1
Depth 69.9%
Table 67%
Girdle Thick
Culet Long
Polish EXCELLENT
Symmetry EXCELLENT
Fluorescence NONE
Inscription(s) IGI LG653451190
Comments: This Laboratory Grown Diamond was created by Chemical Vapor Deposition (CVD) growth process.
Type IIa