



ELECTRONIC COPY

LG653444032
Report verification at igi.org



September 23, 2024

IGI Report Number **LG653444032**

Description **LABORATORY GROWN DIAMOND**

Shape and Cutting Style **HEART BRILLIANT**

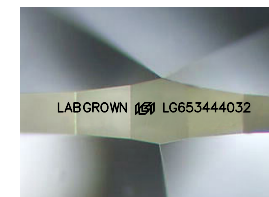
Measurements **10.01 X 10.70 X 6.60 MM**

GRADING RESULTS

Carat Weight **4.03 CARATS**

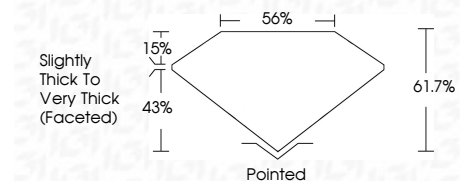
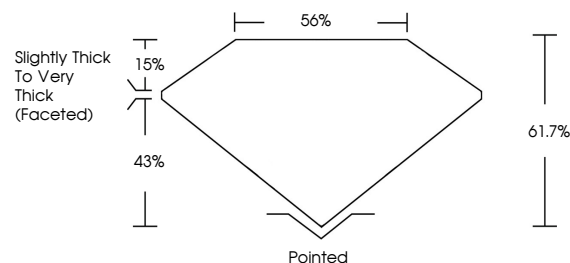
Color Grade **E**

Clarity Grade **SI 1**

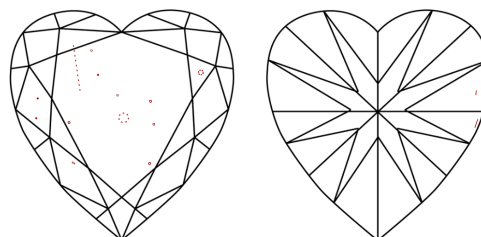


Sample Image Used

PROPORTIONS



CLARITY CHARACTERISTICS



KEY TO SYMBOLS

Red symbols indicate internal characteristics.
Green symbols indicate external characteristics.

COLOR

D E F G H I J Faint Very Light Light

CLARITY

IF	VS ¹⁻²	VS ¹⁻²	SI ¹⁻²	I ¹⁻³
Internally Flawless	Very Very Slightly Included	Very Slightly Included	Slightly Included	Included

ADDITIONAL GRADING INFORMATION

Polish **EXCELLENT**

Symmetry **EXCELLENT**

Fluorescence **NONE**

Inscription(s) **LABGROWN IGI LG653444032**

Comments: This Laboratory Grown Diamond was created by Chemical Vapor Deposition (CVD) growth process. Type IIa



IGI



September 23, 2024
IGI Report No LG653444032
HEART BRILLIANT

4.03 CARATS
E

10.01 X 10.70 X 6.60 MM

Color Grade **E**

Clarity Grade **SI 1**

Depth **61.7%**

Table **56%**

Girdle **Slightly Thick To Very Thick (Faceted)**

Culet **Pointed**

Polish **EXCELLENT**

Symmetry **EXCELLENT**

Fluorescence **NONE**

Inscription(s) **LABGROWN IGI LG653444032**

Comments: This Laboratory Grown Diamond was created by Chemical Vapor Deposition (CVD) growth process. Type IIa