



**INTERNATIONAL  
GEMOLOGICAL  
INSTITUTE**

**LABORATORY GROWN DIAMOND REPORT**

September 25, 2024  
 IGI Report Number **LG653439149**  
 Description **LABORATORY GROWN DIAMOND**  
 Shape and Cutting Style **ROUND BRILLIANT**  
 Measurements **4.72 - 4.81 X 2.86 MM**

**GRADING RESULTS**

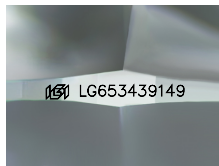
Carat Weight **0.40 CARAT**  
 Color Grade **FANCY VIVID PINK**  
 Clarity Grade **SI 2**  
 Cut Grade **VERY GOOD**

**ADDITIONAL GRADING INFORMATION**

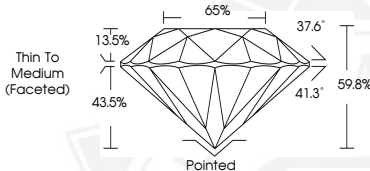
Polish **VERY GOOD**  
 Symmetry **VERY GOOD**  
 Fluorescence **SLIGHT**  
 Inscription(s) **IGI LG653439149**

Comments: This Laboratory Grown Diamond was created by  
 Chemical Vapor Deposition (CVD) growth process.  
 Indications of post-growth treatment.

**ELECTRONIC COPY**



Sample Image Used



September 25, 2024  
 IGI Report Number **LG653439149**  
 ROUND BRILLIANT  
 LABORATORY GROWN DIAMOND  
 4.72 - 4.81 X 2.86 MM  
 Carat Weight **0.40 CARAT**  
 Color Grade **FANCY VIVID PINK**  
 Clarity Grade **SI 2**  
 Cut Grade **VERY GOOD**  
 Polish **VERY GOOD**  
 Symmetry **VERY GOOD**  
 Fluorescence **SLIGHT**  
 Inscription(s) **IGI LG653439149**

Comments: This Laboratory Grown  
 Diamond was created by  
 Chemical Vapor Deposition (CVD)  
 growth process. Indications of  
 post-growth treatment.



September 25, 2024  
 IGI Report Number **LG653439149**  
 ROUND BRILLIANT  
 LABORATORY GROWN DIAMOND  
 4.72 - 4.81 X 2.86 MM  
 Carat Weight **0.40 CARAT**  
 Color Grade **FANCY VIVID PINK**  
 Clarity Grade **SI 2**  
 Cut Grade **VERY GOOD**  
 Polish **VERY GOOD**  
 Symmetry **VERY GOOD**  
 Fluorescence **SLIGHT**  
 Inscription(s) **IGI LG653439149**

Comments: This Laboratory Grown  
 Diamond was created by  
 Chemical Vapor Deposition (CVD)  
 growth process. Indications of  
 post-growth treatment.

THIS DOCUMENT WAS PRODUCED WITH THE FOLLOWING SECURITY MEASURES: SPECIAL DOCUMENT PAPER, INK SCREENS, WATERMARK, BACKGROUND DESIGN, HOLOGRAM AND OTHER SECURITY FEATURES NOT LISTED AND DO EXCEED DOCUMENT SECURITY INDUSTRY GUIDELINES.

For terms & conditions and to verify this report, please visit [www.igi.org](http://www.igi.org)