



# INTERNATIONAL GEMOLOGICAL INSTITUTE

ELECTRONIC COPY

## LABORATORY GROWN DIAMOND REPORT

LG653428292

### LABORATORY GROWN DIAMOND REPORT

#### IGI LABORATORY GROWN DIAMOND IDENTIFICATION REPORT

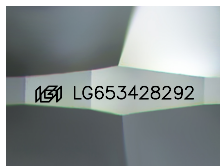
October 25, 2024  
IGI Report Number LG653428292  
Description LABORATORY GROWN DIAMOND  
Shape and Cutting Style ROUND BRILLIANT  
Measurements 8.08 - 8.10 X 5.09 MM

#### GRADING RESULTS

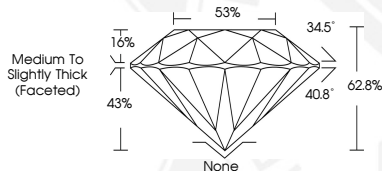
Carat Weight 2.04 CARATS  
Color Grade F  
Clarity Grade VS 1  
Cut Grade EXCELLENT

#### ADDITIONAL GRADING INFORMATION

Polish EXCELLENT  
Symmetry EXCELLENT  
Fluorescence NONE  
Inscription(s) IGI LG653428292



Sample Image Used



THIS DOCUMENT WAS PRODUCED WITH THE FOLLOWING SECURITY MEASURES: SPECIAL DOCUMENT PAPER, INK SCREENS, WATERMARK, BACKGROUND DESIGN, HOLOGRAM AND OTHER SECURITY FEATURES NOT LISTED AND DO EXCEED DOCUMENT SECURITY INDUSTRY GUIDELINES.

For terms & conditions and to verify this report, please visit [www.igi.org](http://www.igi.org)

#### IGI LABORATORY GROWN DIAMOND ID REPORT

October 25, 2024  
IGI Report Number LG653428292  
ROUND BRILLIANT  
8.08 - 8.10 X 5.09 MM  
Carat Weight 2.04 CARATS  
Color Grade F  
Clarity Grade VS 1  
Cut Grade EXCELLENT  
Polish EXCELLENT  
Symmetry EXCELLENT  
Fluorescence NONE  
Inscription(s) IGI LG653428292

#### IGI LABORATORY GROWN DIAMOND ID REPORT

October 25, 2024  
IGI Report Number LG653428292  
ROUND BRILLIANT  
8.08 - 8.10 X 5.09 MM  
Carat Weight 2.04 CARATS  
Color Grade F  
Clarity Grade VS 1  
Cut Grade EXCELLENT  
Polish EXCELLENT  
Symmetry EXCELLENT  
Fluorescence NONE  
Inscription(s) IGI LG653428292