

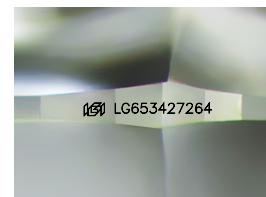
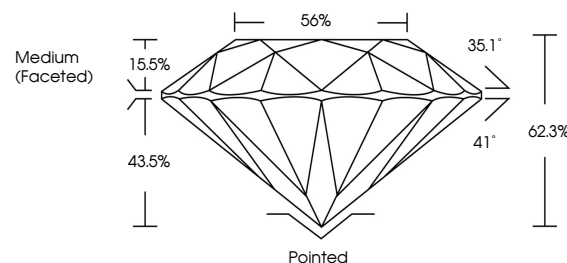


**ELECTRONIC COPY**

## LABORATORY GROWN DIAMOND REPORT

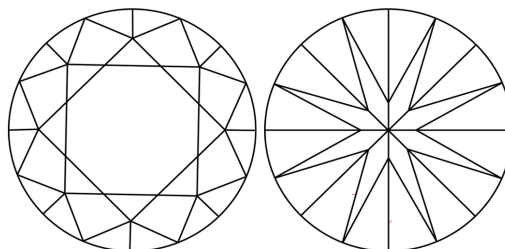
LG653427264  
Report verification at [igi.org](https://igi.org)

## PROPORTIONS



Sample Image Used

## CLARITY CHARACTERISTICS



## KEY TO SYMBOLS

Red symbols indicate internal characteristics.  
Green symbols indicate external characteristics.

## COLOR

D E F G H I J Faint Very Light Light

## CLARITY

IF	VVS <sup>1-2</sup>	VS <sup>1-2</sup>	SI <sup>1-2</sup>	I <sup>1-3</sup>
Internally Flawless	Very Very Slightly Included	Very Slightly Included	Slightly Included	Included



© IGI 2020, International Gemological Institute

FD - 10 20

**www.igi.org**

## LABORATORY GROWN DIAMOND REPORT



September 28, 2024

IGI Report Number **LG653427264**Description **LABORATORY GROWN DIAMOND**Shape and Cutting Style **ROUND BRILLIANT**

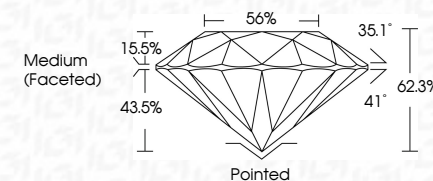
Measurements 7.03 - 7.05 X 4.39 MM

## GRADING RESULTS

Carat Weight 1.32 CARAT

Color Grade **FANCY INTENSE PINK**Clarity Grade WS 2

Cut Grade **IDEAL**



### ADDITIONAL GRADING INFORMATION

Polish **EXCELLENT**Symmetry **EXCELLENT**

Fluorescence SLIGHT

Inscription(s)  LG653427264

Comments: This Laboratory Grown Diamond was created by Chemical Vapor Deposition (CVD) growth process.

Indications of post-growth treatment.



September 28, 2024  
IGI Report No LG65342  
ROUND BRILLIANT

7.03 - 7.05 X 4.39 MM	1.32 CARAT
Carat Weight	
Color Grade	FANCY INTENSE PINK
Clarity Grade	VVS 2
Cut Grade	IDEAL
Depth	62.5%
Table	56%
Girdle	Medium (Excellent)

Culet	Pointed
Polish	EXCELLENT
Symmetry	EXCELLENT
Fluorescence	SLIGHT

**Comments:**  
This Laboratory Grown Diamond was created by Chemical Vapor Deposition (CVD) growth process.