



ELECTRONIC COPY

LABORATORY GROWN DIAMOND REPORT

| | |
|-------------------------|--------------------------|
| October 21, 2024 | |
| IGI Report Number | LG653410293 |
| Description | LABORATORY GROWN DIAMOND |
| Shape and Cutting Style | ROUND BRILLIANT |
| Measurements | 8.43 - 8.46 X 5.22 MM |

GRADING RESULTS

| | |
|---------------|-------------|
| Carat Weight | 2.32 CARATS |
| Color Grade | I |
| Clarity Grade | VVS 2 |
| Cut Grade | IDEAL |

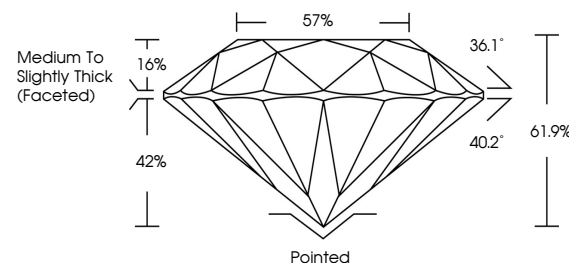
ADDITIONAL GRADING INFORMATION

| | |
|----------------|-----------------|
| Polish | EXCELLENT |
| Symmetry | EXCELLENT |
| Fluorescence | NONE |
| Inscription(s) | 151 LG653410293 |

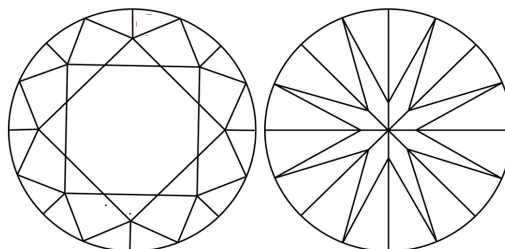
Comments: This Laboratory Grown Diamond was created by Chemical Vapor Deposition (CVD) growth process.
Type IIa

LG653410293
Report verification at lqi.org

PROPORTIONS

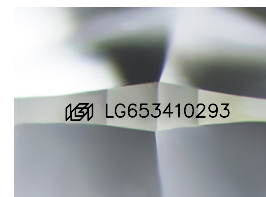


CLARITY CHARACTERISTICS



KEY TO SYMBOLS

Red symbols indicate internal characteristics.
Green symbols indicate external characteristics.



Sample Image Used

COLOR

D E F G H I J Faint Very Light Light

CLARITY

IF WS¹⁻² VS¹⁻² SI¹⁻² |¹⁻³

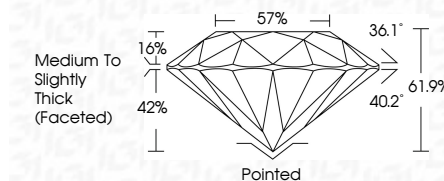
| Internally Flawless | Very Very Slightly Included | Very Slightly Included | Slightly Included | Included |
|------------------------|--------------------------------|---------------------------|----------------------|----------|
|------------------------|--------------------------------|---------------------------|----------------------|----------|



| | |
|-------------------------|--------------------------|
| October 21, 2024 | |
| IGI Report Number | LG653410293 |
| Description | LABORATORY GROWN DIAMOND |
| Shape and Cutting Style | ROUND BRILLIANT |
| Measurements | 8.43 - 8.46 X 5.22 MM |

GRADING RESULTS

| | |
|---------------|-------------|
| Carat Weight | 2.32 CARATS |
| Color Grade | I |
| Clarity Grade | VVS 2 |
| Cut Grade | IDEAL |



ADDITIONAL GRADING INFORMATION

| | |
|---|--|
| Polish | EXCELLENT |
| Symmetry | EXCELLENT |
| Fluorescence | NONE |
| Inscription(s) |  LG653410293 |
| <p>Comments: This Laboratory Grown Diamond was created by Chemical Vapor Deposition (CVD) growth process.</p> <p>Type IIa</p> | |



© IGI 2020, International Gemological Institute

FD - 10 20

www.igi.org



THIS DOCUMENT WAS PRODUCED WITH THE FOLLOWING SECURITY MEASURES: SPECIAL DOCUMENT PAPER, INK SCREENS, WATERMARK, BACKGROUND DESIGNS, HOLOGRAM AND OTHER SECURITY FEATURES NOT LISTED AND DO EXCEED DOCUMENT SECURITY INDUSTRY GUIDELINE

October 21, 2024
 IGI Report No LG653410293
 ROUND BRILLIANT

| | | | |
|-----------------|-----------------------|---|------------------------------------|
| ROUND BRILLIANT | 4.63 - 4.86 X 5.22 MM | | 2.32 CARATS |
| | Carat Weight | I | VVS 2 |
| | Color Grade | | IDEAL |
| | Clarity Grade | | 61.9% |
| | Cut Grade | | 57% |
| | Depth | | Medium to Slightly Thick (Faceted) |
| | Table | | Pointed |
| | Girdle | | EXCELLENT |
| | Culet | | EXCELLENT |
| | Polish | | NONE |
| Symmetry | | | |
| Fluorescence | | | |

Comments:
This Laboratory Grown Diamond was
created by Chemical Vapor Deposition
(CVD) growth process.