



INTERNATIONAL GEMOLOGICAL INSTITUTE

LABORATORY GROWN DIAMOND REPORT

September 28, 2024

IGI Report Number

LG652498439

Description

LABORATORY GROWN DIAMOND

Shape and Cutting Style

ROUND BRILLIANT

Measurements

6.28 - 6.32 X 3.82 MM

GRADING RESULTS

Carat Weight

0.93 CARAT

Color Grade

FANCY INTENSE PINK

Clarity Grade

VS 2

Cut Grade

IDEAL

ADDITIONAL GRADING INFORMATION

Polish

EXCELLENT

Symmetry

EXCELLENT

Fluorescence

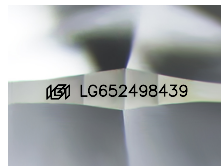
SLIGHT

Inscription(s)

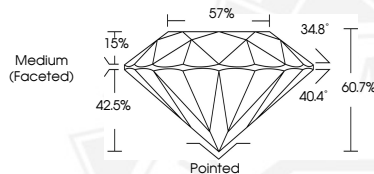
IGI LG652498439

Comments: This Laboratory Grown Diamond was created by High Pressure High Temperature (HPHT) growth process. Indications of post-growth treatment.

ELECTRONIC COPY



Sample Image Used



September 28, 2024

IGI Report Number LG652498439

ROUND BRILLIANT

LABORATORY GROWN DIAMOND

6.28 - 6.32 X 3.82 MM

Carat Weight 0.93 CARAT

Color Grade FANCY INTENSE

Clarity Grade PINK

Cut Grade VS 2

Polish EXCELLENT

Symmetry EXCELLENT

Fluorescence SLIGHT

Inscription(s) IGI LG652498439

Comments: This Laboratory Grown Diamond was created by High Pressure High Temperature (HPHT) growth process. Indications of post-growth treatment.



September 28, 2024

IGI Report Number LG652498439

ROUND BRILLIANT

LABORATORY GROWN DIAMOND

6.28 - 6.32 X 3.82 MM

Carat Weight 0.93 CARAT

Color Grade FANCY INTENSE

Clarity Grade PINK

Cut Grade VS 2

Polish EXCELLENT

Symmetry EXCELLENT

Fluorescence SLIGHT

Inscription(s) IGI LG652498439

Comments: This Laboratory Grown Diamond was created by High Pressure High Temperature (HPHT) growth process. Indications of post-growth treatment.



THIS DOCUMENT WAS PRODUCED WITH THE FOLLOWING SECURITY MEASURES: SPECIAL DOCUMENT PAPER, INK SCREENS, WATERMARK, BACKGROUND DESIGNS, HOLOGRAM AND OTHER SECURITY FEATURES NOT LISTED AND DO EXCEED DOCUMENT SECURITY INDUSTRY GUIDELINES.

For terms & conditions and to verify this report, please visit www.igi.org