



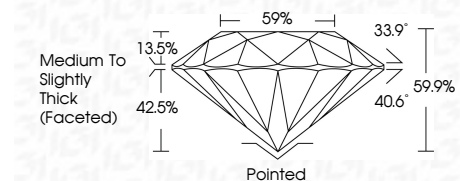
ELECTRONIC COPY

LG652481483
Report verification at igi.org



October 28, 2024
IGI Report Number **LG652481483**
Description **LABORATORY GROWN DIAMOND**
Shape and Cutting Style **ROUND BRILLIANT**
Measurements **7.82 - 7.87 X 4.70 MM**

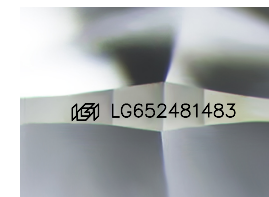
GRADING RESULTS
Carat Weight **1.77 CARAT**
Color Grade **D**
Clarity Grade **VS 1**
Cut Grade **IDEAL**



ADDITIONAL GRADING INFORMATION
Polish **EXCELLENT**
Symmetry **EXCELLENT**
Fluorescence **NONE**
Inscription(s) **IGI LG652481483**
Comments: As Grown - No indication of post-growth treatment.
This Laboratory Grown Diamond was created by High Pressure High Temperature (HPHT) growth process.
Type II

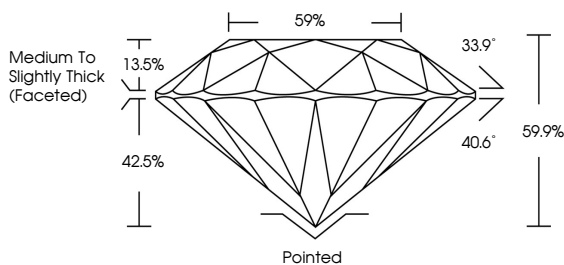


October 28, 2024
IGI Report No. **LG652481483**
ROUND BRILLIANT
Carat Weight **1.77 CARAT**
Color Grade **D**
Clarity Grade **VS 1**
Depth **IDEAL**
Table **59%**
Girdle **42.5%**
Crown Angle **33.9°**
Pavilion Angle **40.6°**
Crown Height **13.5%**
Pavilion Depth **59.9%**
Cut **Pointed**
Polish **EXCELLENT**
Symmetry **EXCELLENT**
Fluorescence **NONE**
Inscriptions(s) **IGI LG652481483**
Comments: As Grown - No indication of post-growth treatment.
This Laboratory Grown Diamond was created by High Pressure High Temperature (HPHT) growth process.
Type II

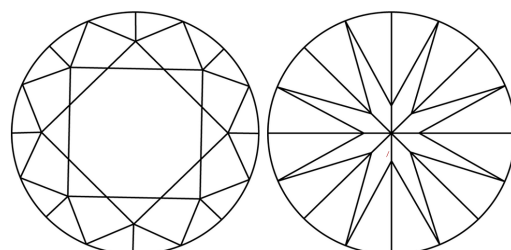


Sample Image Used

PROPORTIONS



CLARITY CHARACTERISTICS



KEY TO SYMBOLS

Red symbols indicate internal characteristics.
Green symbols indicate external characteristics.

COLOR

D E F G H I J Faint Very Light Light

CLARITY

IF VS¹⁻² VS¹⁻² SI¹⁻² I¹⁻³
Internally Flawless Very Very Slightly Included Very Slightly Included Slightly Included Included

