



**ELECTRONIC COPY**

LG652476206  
Report verification at igi.org



September 19, 2024

IGI Report Number **LG652476206**

Description **LABORATORY GROWN DIAMOND**

Shape and Cutting Style **CUT CORNERED  
RECTANGULAR MODIFIED  
BRILLIANT**

Measurements **8.38 X 6.10 X 4.17 MM**

**GRADING RESULTS**

Carat Weight **1.85 CARAT**

Color Grade **D**

Clarity Grade **VS 2**

**LABORATORY GROWN DIAMOND REPORT**

September 19, 2024

IGI Report Number **LG652476206**

Description **LABORATORY GROWN DIAMOND**

Shape and Cutting Style **CUT CORNERED RECTANGULAR  
MODIFIED BRILLIANT**

Measurements **8.38 X 6.10 X 4.17 MM**

**GRADING RESULTS**

Carat Weight **1.85 CARAT**

Color Grade **D**

Clarity Grade **VS 2**

**ADDITIONAL GRADING INFORMATION**

Polish **EXCELLENT**

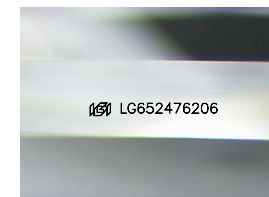
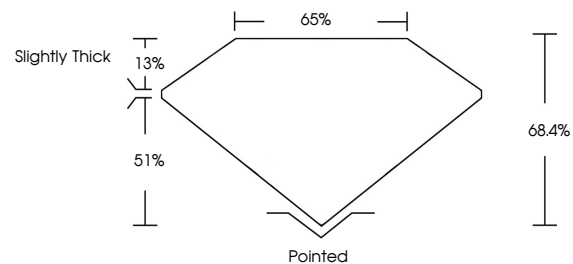
Symmetry **EXCELLENT**

Fluorescence **NONE**

Inscription(s) **IGI LG652476206**

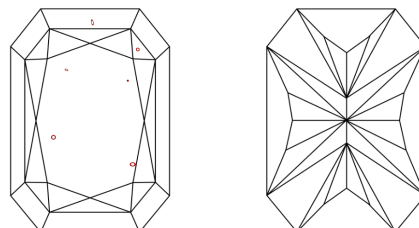
Comments: This Laboratory Grown Diamond was created by Chemical Vapor Deposition (CVD) growth process.  
Type IIa

**PROPORTIONS**



Sample Image Used

**CLARITY CHARACTERISTICS**



**KEY TO SYMBOLS**

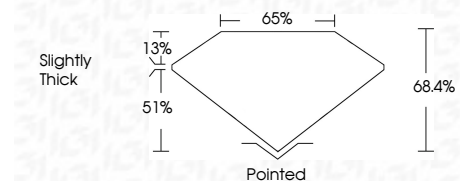
Red symbols indicate internal characteristics.  
Green symbols indicate external characteristics.

**COLOR**

D E F G H I J Faint Very Light Light

**CLARITY**

IF	VS <sup>1-2</sup>	VS <sup>1-2</sup>	SI <sup>1-2</sup>	I <sup>1-3</sup>
Internally Flawless	Very Very Slightly Included	Very Slightly Included	Slightly Included	Included



**ADDITIONAL GRADING INFORMATION**

Polish **EXCELLENT**

Symmetry **EXCELLENT**

Fluorescence **NONE**

Inscription(s) **IGI LG652476206**

Comments: This Laboratory Grown Diamond was created by Chemical Vapor Deposition (CVD) growth process.  
Type IIa



**IGI**



September 19, 2024  
IGI Report No. LG652476206  
CUT CORNERED RECT. MODIFIED BRILLIANT  
8.38 X 6.10 X 4.17 MM  
Carat Weight 1.85 CARAT  
Color Grade D  
Clarity Grade VS 2  
Table 68.4%  
Girdle 65%  
Slightly Thick  
Culet Pointed  
Polish EXCELLENT  
Symmetry EXCELLENT  
Fluorescence NONE  
Inscription(s) IGI LG652476206

Comments: This Laboratory Grown Diamond was created by Chemical Vapor Deposition (CVD) growth process.  
Type IIa