



ELECTRONIC COPY

LG652470414
Report verification at igi.org



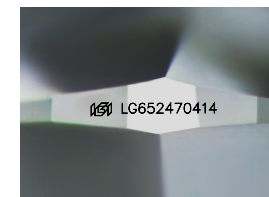
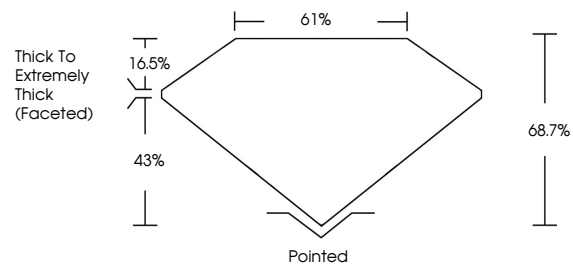
September 23, 2024
IGI Report Number **LG652470414**
Description **LABORATORY GROWN DIAMOND**
Shape and Cutting Style **SQUARE CUSHION MODIFIED BRILLIANT**

Measurements **7.97 X 7.66 X 5.26 MM**

GRADING RESULTS

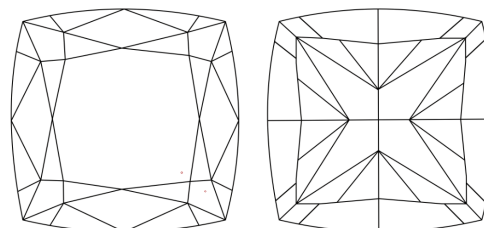
Carat Weight **3.10 CARATS**
Color Grade **FANCY VIVID BROWNISH PINK**
Clarity Grade **VVS 2**

PROPORTIONS



Sample Image Used

CLARITY CHARACTERISTICS



KEY TO SYMBOLS

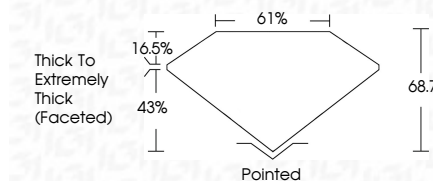
Red symbols indicate internal characteristics.
Green symbols indicate external characteristics.

COLOR

D E F G H I J Faint Very Light Light

CLARITY

IF	VS ¹⁻²	VS ¹⁻²	SI ¹⁻²	I ¹⁻³
Internally Flawless	Very Very Slightly Included	Very Slightly Included	Slightly Included	Included



ADDITIONAL GRADING INFORMATION

Polish **EXCELLENT**
Symmetry **EXCELLENT**
Fluorescence **SLIGHT**
Inscription(s) **IGI LG652470414**

Comments: This Laboratory Grown Diamond was created by Chemical Vapor Deposition (CVD) growth process. Indications of post-growth treatment.



IGI



September 23, 2024
IGI Report No **LG652470414**
SQUARE CUSHION MODIFIED BRILLIANT
3.10 CARATS
Carat Weight **FANCY VIVID BROWNISH PINK**
Color Grade **VVS 2**
Depth **68.7%**
Table **61%**
Girdle **Thick to Extremely Thick (Faceted)**
Culet **Pointed**
Polish **EXCELLENT**
Symmetry **EXCELLENT**
Fluorescence **SLIGHT**
Inscription(s) **IGI LG652470414**
Comments: This Laboratory Grown Diamond was created by Chemical Vapor Deposition (CVD) growth process. Indications of post-growth treatment.