



INTERNATIONAL GEMOLOGICAL INSTITUTE

ELECTRONIC COPY

LG652456887



September 17, 2024

IGI Report Number LG652456887

PRINCESS CUT

LABORATORY GROWN DIAMOND

4.67 X 4.50 X 3.29 MM

Carat Weight 0.62 CARAT

Color Grade E

Clarity Grade VS 1

Polish EXCELLENT

Symmetry VERY GOOD

Fluorescence NONE

Inscription(s) IGI LG652456887

Comments: This Laboratory Grown Diamond was created by Chemical Vapor Deposition (CVD) growth process. Type IIa

LABORATORY GROWN DIAMOND REPORT

September 17, 2024

IGI Report Number

LG652456887

Description

LABORATORY GROWN DIAMOND

Shape and Cutting Style

PRINCESS CUT

Measurements

4.67 X 4.50 X 3.29 MM

GRADING RESULTS

Carat Weight 0.62 CARAT

Color Grade E

Clarity Grade VS 1

ADDITIONAL GRADING INFORMATION

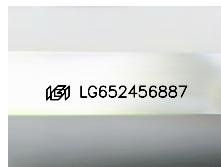
Polish EXCELLENT

Symmetry VERY GOOD

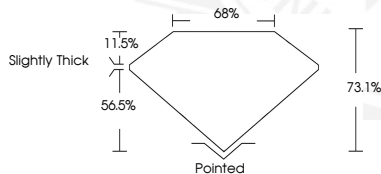
Fluorescence NONE

Inscription(s) IGI LG652456887

Comments: This Laboratory Grown Diamond was created by Chemical Vapor Deposition (CVD) growth process. Type IIa



Sample Image Used



September 17, 2024

IGI Report Number LG652456887

PRINCESS CUT

LABORATORY GROWN DIAMOND

4.67 X 4.50 X 3.29 MM

Carat Weight 0.62 CARAT

Color Grade E

Clarity Grade VS 1

Polish EXCELLENT

Symmetry VERY GOOD

Fluorescence NONE

Inscription(s) IGI LG652456887

Comments: This Laboratory Grown Diamond was created by Chemical Vapor Deposition (CVD) growth process. Type IIa



THIS DOCUMENT WAS PRODUCED WITH THE FOLLOWING SECURITY MEASURES: SPECIAL DOCUMENT PAPER, INK SCREENS, WATERMARK, BACKGROUND DESIGNS, HOLOGRAM AND OTHER SECURITY FEATURES NOT LISTED AND DO EXCEED DOCUMENT SECURITY INDUSTRY GUIDELINES.

For terms & conditions and to verify this report, please visit www.igi.org