



ELECTRONIC COPY

LG652451580
Report verification at igi.org



July 9, 2025
IGI Report Number **LG652451580**
Description **LABORATORY GROWN DIAMOND**
Shape and Cutting Style **MARQUISE BRILLIANT**
Measurements **16.35 X 8.41 X 4.94 MM**
GRADING RESULTS
Carat Weight **3.98 CARATS**
Color Grade **F**
Clarity Grade **VS 1**
Cut Grade **VERY GOOD**

LABORATORY GROWN DIAMOND REPORT

July 9, 2025
IGI Report Number **LG652451580**
Description **LABORATORY GROWN DIAMOND**
Shape and Cutting Style **MARQUISE BRILLIANT**
Measurements **16.35 X 8.41 X 4.94 MM**

GRADING RESULTS

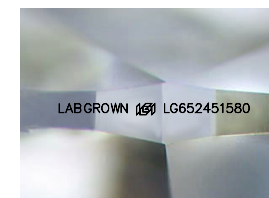
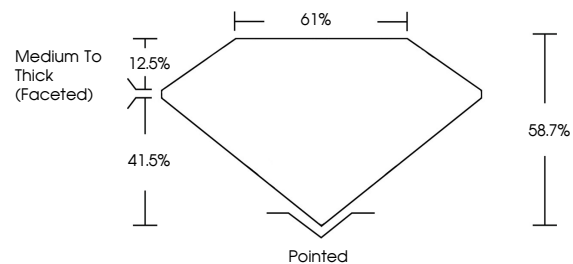
Carat Weight **3.98 CARATS**
Color Grade **F**
Clarity Grade **VS 1**
Cut Grade **VERY GOOD**

ADDITIONAL GRADING INFORMATION

Polish **EXCELLENT**
Symmetry **VERY GOOD**
Fluorescence **NONE**
Inscription(s) **LABGROWN (LGI) LG652451580**

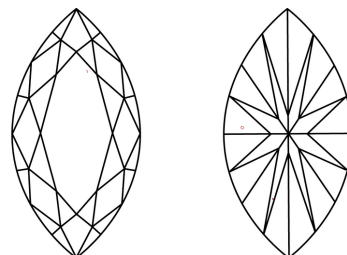
Comments: This Laboratory Grown Diamond was created by Chemical Vapor Deposition (CVD) growth process.

PROPORTIONS



Sample Image Used

CLARITY CHARACTERISTICS



KEY TO SYMBOLS

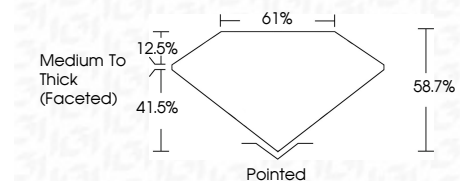
Red symbols indicate internal characteristics.
Green symbols indicate external characteristics.

COLOR

D E F G H I J Faint Very Light Light

CLARITY

IF	VS ¹⁻²	VS ¹⁻²	SI ¹⁻²	I ¹⁻³
Internally Flawless	Very Very Slightly Included	Very Slightly Included	Slightly Included	Included



ADDITIONAL GRADING INFORMATION

Polish **EXCELLENT**
Symmetry **VERY GOOD**
Fluorescence **NONE**
Inscription(s) **LABGROWN (LGI) LG652451580**
Comments: This Laboratory Grown Diamond was created by Chemical Vapor Deposition (CVD) growth process.



July 9, 2025
IGI Report No LG652451580
MARQUISE BRILLIANT
16.35 X 8.41 X 4.94 MM
3.98 CARATS
Color Grade **F**
Clarity Grade **VS 1**
Depth **58.7%**
Table **61%**
Girdle **Medium To Thick (Faceted)**
Culet **Pointed**
Polish **EXCELLENT**
Symmetry **VERY GOOD**
Fluorescence **NONE**
Inscription(s) **LABGROWN (LGI) LG652451580**
Comments: This Laboratory Grown Diamond was created by Chemical Vapor Deposition (CVD) growth process.