



ELECTRONIC COPY

LG652449802 Report verification at igi.org



June 10, 2026 IGI Report Number LG652449802 Description LABORATORY GROWN DIAMOND Shape and Cutting Style OVAL BRILLIANT Measurements 8.08 X 5.81 X 3.57 MM GRADING RESULTS Carat Weight 1.06 CARAT Color Grade E Clarity Grade VVS 2 Cut Grade EXCELLENT

June 10, 2026 IGI Report Number LG652449802 Description LABORATORY GROWN DIAMOND Shape and Cutting Style OVAL BRILLIANT Measurements 8.08 X 5.81 X 3.57 MM

GRADING RESULTS

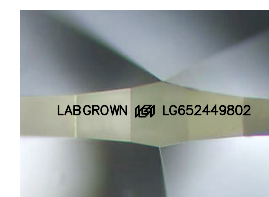
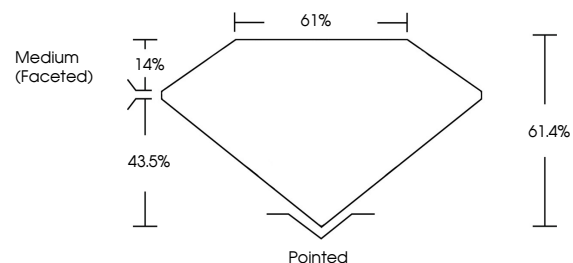
Carat Weight 1.06 CARAT Color Grade E Clarity Grade VVS 2 Cut Grade EXCELLENT

ADDITIONAL GRADING INFORMATION

Polish EXCELLENT Symmetry EXCELLENT Fluorescence NONE Inscription(s) LABGROWN (IGI) LG652449802

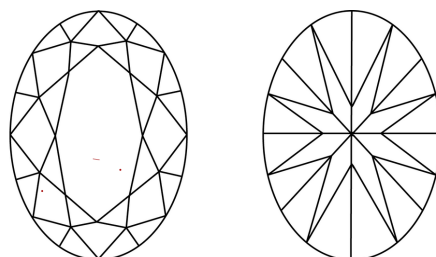
Comments: This Laboratory Grown Diamond was created by Chemical Vapor Deposition (CVD) growth process. Type IIa

PROPORTIONS



Sample Image Used

CLARITY CHARACTERISTICS



KEY TO SYMBOLS

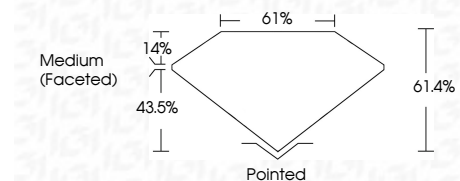
Red symbols indicate internal characteristics. Green symbols indicate external characteristics.

COLOR

D E F G H I J Faint Very Light Light

CLARITY

FL IF VVS 1-2 VS 1-2 SI 1-2 I 1-3 Flawless Internally Flawless Very Very Slightly Included Very Slightly Included Slightly Included Included



ADDITIONAL GRADING INFORMATION

Polish EXCELLENT Symmetry EXCELLENT Fluorescence NONE Inscription(s) LABGROWN (IGI) LG652449802 Comments: This Laboratory Grown Diamond was created by Chemical Vapor Deposition (CVD) growth process. Type IIa



June 10, 2026 IGI Report No LG652449802 OVAL BRILLIANT 8.08 X 5.81 X 3.57 MM 1.06 CARAT E VVS 2 EXCELLENT 61.4% 61% Medium (Faceted) Pointed EXCELLENT EXCELLENT NONE LABGROWN (IGI) LG652449802 Comments: This Laboratory Grown Diamond was created by Chemical Vapor Deposition (CVD) growth process. Type IIa