



**ELECTRONIC COPY**

LG652429263  
Report verification at igi.org



September 13, 2024

IGI Report Number **LG652429263**

Description **LABORATORY GROWN DIAMOND**

Shape and Cutting Style **EMERALD CUT**

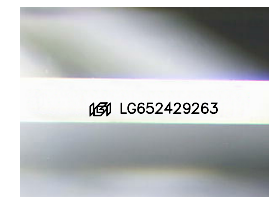
Measurements **7.66 X 5.44 X 3.41 MM**

**GRADING RESULTS**

Carat Weight **1.41 CARAT**

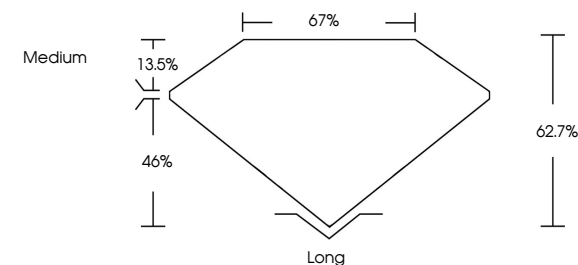
Color Grade **D**

Clarity Grade **VS 1**

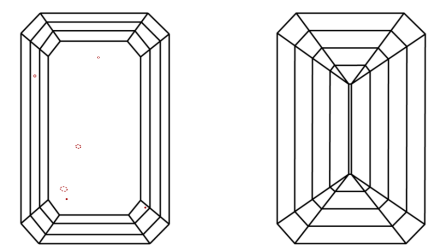


Sample Image Used

**PROPORTIONS**



**CLARITY CHARACTERISTICS**



**KEY TO SYMBOLS**

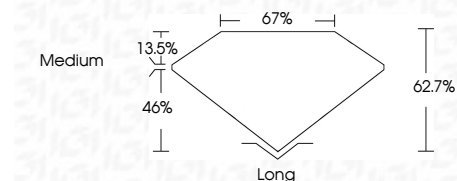
Red symbols indicate internal characteristics.  
Green symbols indicate external characteristics.

**COLOR**

D	E	F	G	H	I	J	Faint	Very Light	Light
---	---	---	---	---	---	---	-------	------------	-------

**CLARITY**

IF	VS <sup>1-2</sup>	VS <sup>1-2</sup>	SI <sup>1-2</sup>	I <sup>1-3</sup>
Internally Flawless	Very Very Slightly Included	Very Slightly Included	Slightly Included	Included



**ADDITIONAL GRADING INFORMATION**

Polish **EXCELLENT**

Symmetry **EXCELLENT**

Fluorescence **NONE**

Inscription(s) **IGI LG652429263**

Comments: This Laboratory Grown Diamond was created by Chemical Vapor Deposition (CVD) growth process.  
Type IIa



**IGI**



September 13, 2024  
IGI Report No. LG652429263  
**EMERALD CUT**

**1.41 CARAT**  
D

**7.66 X 5.44 X 3.41 MM**

Color Grade **D**  
Clarity Grade **VS 1**  
Depth **46.7%**  
Table **13.5%**  
Girdle **Medium**

Culet **Long**  
Polish **EXCELLENT**  
Symmetry **EXCELLENT**  
Fluorescence **NONE**  
Inscription(s) **IGI LG652429263**

Comments: This Laboratory Grown Diamond was created by Chemical Vapor Deposition (CVD) growth process.  
Type IIa