



ELECTRONIC COPY

LABORATORY GROWN DIAMOND REPORT

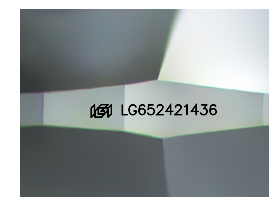
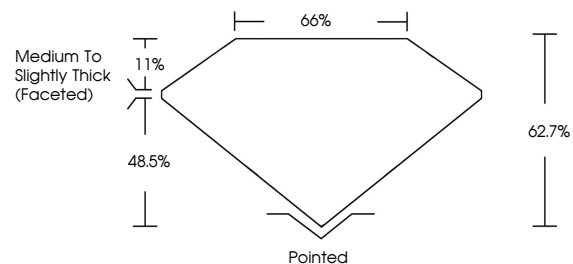
September 14, 2024
 IGI Report Number **LG652421436**
 Description **LABORATORY GROWN DIAMOND**
 Shape and Cutting Style **CUSHION BRILLIANT**
 Measurements **8.15 X 6.04 X 3.79 MM**
GRADING RESULTS
 Carat Weight **1.51 CARAT**
 Color Grade **FANCY VIVID BLUE**
 Clarity Grade **VS 1**

ADDITIONAL GRADING INFORMATION

Polish **EXCELLENT**
 Symmetry **EXCELLENT**
 Fluorescence **NONE**
 Inscription(s) **IGI LG652421436**

Comments: This Laboratory Grown Diamond was created by Chemical Vapor Deposition (CVD) growth process. Indications of post-growth treatment.

PROPORTIONS



Sample Image Used

COLOR

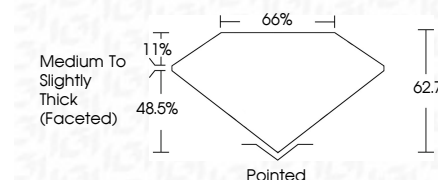
D	E	F	G	H	I	J	Faint	Very Light	Light
---	---	---	---	---	---	---	-------	------------	-------

CLARITY

IF	VS ¹⁻²	VS ¹⁻²	SI ¹⁻²	I ¹⁻³
Internally Flawless	Very Very Slightly Included	Very Slightly Included	Slightly Included	Included



September 14, 2024
 IGI Report Number **LG652421436**
 Description **LABORATORY GROWN DIAMOND**
 Shape and Cutting Style **CUSHION BRILLIANT**
 Measurements **8.15 X 6.04 X 3.79 MM**
GRADING RESULTS
 Carat Weight **1.51 CARAT**
 Color Grade **FANCY VIVID BLUE**
 Clarity Grade **VS 1**



ADDITIONAL GRADING INFORMATION

Polish **EXCELLENT**
 Symmetry **EXCELLENT**
 Fluorescence **NONE**
 Inscription(s) **IGI LG652421436**

Comments: This Laboratory Grown Diamond was created by Chemical Vapor Deposition (CVD) growth process. Indications of post-growth treatment.



September 14, 2024
 IGI Report No LG652421436
CUSHION BRILLIANT
8.15 X 6.04 X 3.79 MM
 Carat Weight **1.51 CARAT**
 Color Grade **FANCY VIVID BLUE**
 Clarity Grade **VS 1**
 Depth **62.7%**
 Table **66%**
 Girdle **Medium to Slightly Thick (Faceted)**
 Culet **Pointed**
 Polish **EXCELLENT**
 Symmetry **EXCELLENT**
 Fluorescence **NONE**
 Inscription(s) **IGI LG652421436**
 Comments: This Laboratory Grown Diamond was created by Chemical Vapor Deposition (CVD) growth process. Indications of post-growth treatment.