



ELECTRONIC COPY

LG651496445
Report verification at igi.org



September 24, 2024
IGI Report Number **LG651496445**
Description **LABORATORY GROWN DIAMOND**
Shape and Cutting Style **CUT CORNERED
RECTANGULAR MODIFIED
BRILLIANT**
Measurements **9.84 X 7.03 X 4.85 MM**
GRADING RESULTS
Carat Weight **3.22 CARATS**
Color Grade **FANCY VIVID GREEN**
Clarity Grade **VS 1**

LABORATORY GROWN DIAMOND REPORT

September 24, 2024
IGI Report Number **LG651496445**
Description **LABORATORY GROWN DIAMOND**
Shape and Cutting Style **CUT CORNERED RECTANGULAR
MODIFIED BRILLIANT**
Measurements **9.84 X 7.03 X 4.85 MM**

GRADING RESULTS

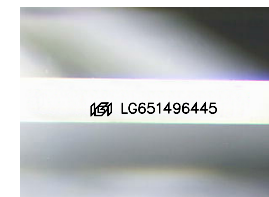
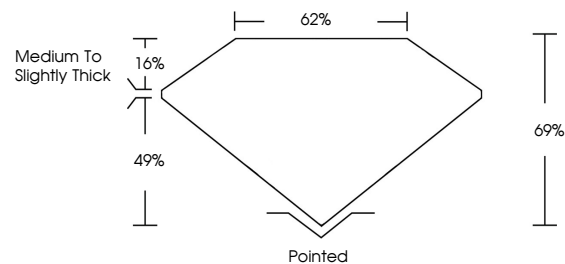
Carat Weight **3.22 CARATS**
Color Grade **FANCY VIVID GREEN**
Clarity Grade **VS 1**

ADDITIONAL GRADING INFORMATION

Polish **EXCELLENT**
Symmetry **EXCELLENT**
Fluorescence **NONE**
Inscription(s) **IGI LG651496445**

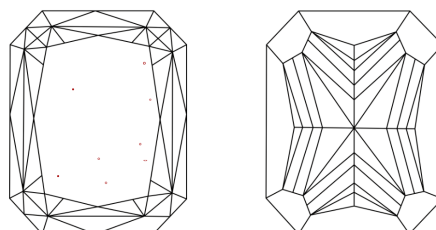
Comments: This Laboratory Grown Diamond was created by Chemical Vapor Deposition (CVD) growth process. Indications of post-growth treatment.

PROPORTIONS



Sample Image Used

CLARITY CHARACTERISTICS



KEY TO SYMBOLS

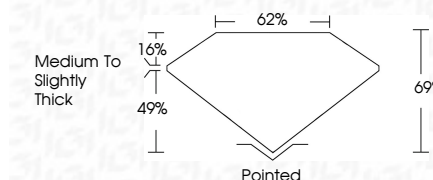
Red symbols indicate internal characteristics.
Green symbols indicate external characteristics.

COLOR

D E F G H I J Faint Very Light Light

CLARITY

IF	VS ¹⁻²	VS ¹⁻²	SI ¹⁻²	I ¹⁻³
Internally Flawless	Very Very Slightly Included	Very Slightly Included	Slightly Included	Included



ADDITIONAL GRADING INFORMATION

Polish **EXCELLENT**
Symmetry **EXCELLENT**
Fluorescence **NONE**
Inscription(s) **IGI LG651496445**
Comments: This Laboratory Grown Diamond was created by Chemical Vapor Deposition (CVD) growth process. Indications of post-growth treatment.



IGI



September 24, 2024
IGI Report No LG651496445
CUT CORNERED RECT. MODIFIED BRILLIANT
9.84 X 7.03 X 4.85 MM
3.22 CARATS
FANCY VIVID GREEN
VS 1
69%
62%
Medium to Slightly Thick
Pointed
EXCELLENT
EXCELLENT
NONE
IGI LG651496445

Comments: This Laboratory Grown Diamond was created by Chemical Vapor Deposition (CVD) growth process. Indications of post-growth treatment.