



ELECTRONIC COPY

LABORATORY GROWN DIAMOND REPORT

September 14, 2024	
IGI Report Number	LG651475497
Description	LABORATORY GROWN DIAMOND
Shape and Cutting Style	ROUND BRILLIANT
Measurements	8.31 - 8.34 X 4.94 MM

GRADING RESULTS

Carat Weight	2.08 CARATS
Color Grade	FANCY INTENSE PINK
Clarity Grade	VVS 2
Cut Grade	IDEAL

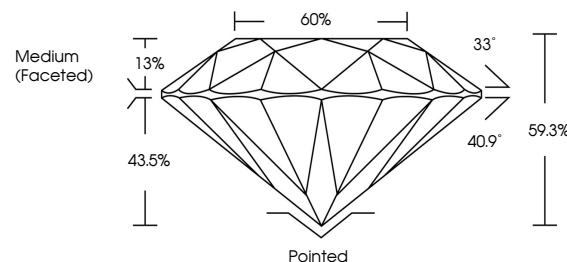
ADDITIONAL GRADING INFORMATION

Polish	EXCELLENT
Symmetry	EXCELLENT
Fluorescence	SLIGHT
Inscription(s)	15 LG651475497

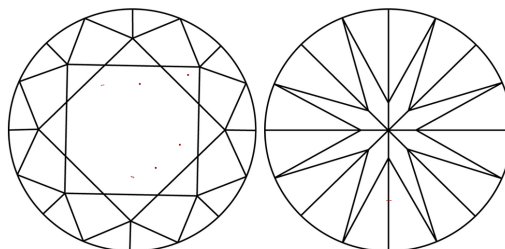
Comments: This Laboratory Grown Diamond was created by Chemical Vapor Deposition (CVD) growth process.
Indications of post-growth treatment.

LG651475497
Report verification at [igi.org](https://www.igi.org)

PROPORTIONS

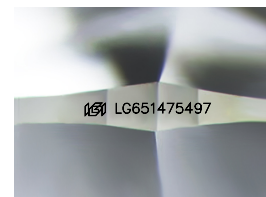


CLARITY CHARACTERISTICS



KEY TO SYMBOLS

Red symbols indicate internal characteristics.
Green symbols indicate external characteristics.



Sample Image Used

COLOR

D E F G H I J Faint Very Light Light

CLARITY

IF	VVS ^{1,2}	VS ^{1,2}	SI ^{1,2}	I ^{1,3}
Internally Flawless	Very Very Slightly Included	Very Slightly Included	Slightly Included	Included



© IGI 2020, International Gemological Institute

FD - 10 20

www.igi.org

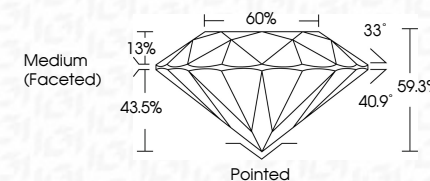
LABORATORY GROWN DIAMOND REPORT



September 14, 2024	
IGI Report Number	LG651475497
Description	LABORATORY GROWN DIAMOND
Shape and Cutting Style	ROUND BRILLIANT
Measurements	8.31 - 8.34 X 4.94 MM

GRADING RESULTS

Carat Weight	2.08 CARATS
Color Grade	FANCY INTENSE PINK
Clarity Grade	VVS 2
Cut Grade	IDEAL



ADDITIONAL GRADING INFORMATION

Polish	EXCELLENT
Symmetry	EXCELLENT
Fluorescence	SLIGHT
Inscription(s)	103 LG651475497

Comments: This Laboratory Grown Diamond was created by Chemical Vapor Deposition (CVD) growth process.
Indications of post-growth treatment.



September 14, 2024
 IGI Report No LG651475497
 ROUND BRILLIANT

331 - 8.54 X 4.94 MM	2.08 CARATS	
	FANCY INTENSE PINK	
Color Weight	VVS 2	Pointed
Color Grade	IDP&L	EXCELLENT
Clarity	99.9%	EXCELLENT
Clarity Grade	60%	SIGHT
Cut Grade	Medium (Faceted)	
Depth		
Table		
Girdle		
Culet		
Polish		
Symmetry		
Fluorescence		

Comments:
This Laboratory Grown Diamond was
created by Chemical Vapor Deposition
(CVD) growth process.