



**INTERNATIONAL
GEMOLOGICAL
INSTITUTE**

LABORATORY GROWN DIAMOND REPORT

September 19, 2024
 IGI Report Number **LG651467130**
 Description **LABORATORY GROWN DIAMOND**
 Shape and Cutting Style **ROUND BRILLIANT**
 Measurements **4.71 - 4.74 X 2.88 MM**

GRADING RESULTS

Carat Weight **0.40 CARAT**
 Color Grade **FANCY VIVID PINK**
 Clarity Grade **VVS 2**
 Cut Grade **VERY GOOD**

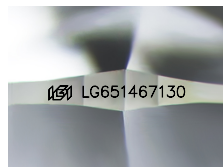
ADDITIONAL GRADING INFORMATION

Polish **EXCELLENT**
 Symmetry **VERY GOOD**
 Fluorescence **SLIGHT**
 Inscription(s) **IGI LG651467130**

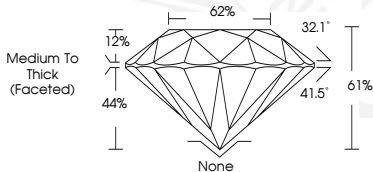
Comments: This Laboratory Grown Diamond was created by
 Chemical Vapor Deposition (CVD) growth process.
 Indications of post-growth treatment.

ELECTRONIC COPY

LG651467130



Sample Image Used



September 19, 2024
 IGI Report Number **LG651467130**
 ROUND BRILLIANT
 LABORATORY GROWN DIAMOND
 4.71 - 4.74 X 2.88 MM
 Carat Weight **0.40 CARAT**
 Color Grade **FANCY VIVID PINK**
 Clarity Grade **VVS 2**
 Cut Grade **VERY GOOD**
 Polish **EXCELLENT**
 Symmetry **VERY GOOD**
 Fluorescence **SLIGHT**
 Inscription(s) **IGI LG651467130**

Comments: This Laboratory Grown Diamond was created by
 Chemical Vapor Deposition (CVD) growth process. Indications of
 post-growth treatment.



September 19, 2024
 IGI Report Number **LG651467130**
 ROUND BRILLIANT
 LABORATORY GROWN DIAMOND
 4.71 - 4.74 X 2.88 MM
 Carat Weight **0.40 CARAT**
 Color Grade **FANCY VIVID PINK**
 Clarity Grade **VVS 2**
 Cut Grade **VERY GOOD**
 Polish **EXCELLENT**
 Symmetry **VERY GOOD**
 Fluorescence **SLIGHT**
 Inscription(s) **IGI LG651467130**

Comments: This Laboratory Grown Diamond was created by
 Chemical Vapor Deposition (CVD) growth process. Indications of
 post-growth treatment.

THIS DOCUMENT WAS PRODUCED WITH THE FOLLOWING SECURITY MEASURES: SPECIAL DOCUMENT PAPER, PINK SCREENS, WATERMARK, BACKGROUND DESIGN, HOLOGRAM AND OTHER SECURITY FEATURES NOT LISTED AND DO EXCEED DOCUMENT SECURITY INDUSTRY GUIDELINES.

For terms & conditions and to verify this report, please visit www.igi.org