



**INTERNATIONAL  
GEMOLOGICAL  
INSTITUTE**

**LABORATORY GROWN DIAMOND REPORT**

September 19, 2024  
 IGI Report Number **LG651467125**  
 Description **LABORATORY GROWN DIAMOND**  
 Shape and Cutting Style **ROUND BRILLIANT**  
 Measurements **4.29 - 4.32 X 2.72 MM**

**GRADING RESULTS**

Carat Weight **0.31 CARAT**  
 Color Grade **FANCY VIVID PINK**  
 Clarity Grade **VS 1**  
 Cut Grade **VERY GOOD**

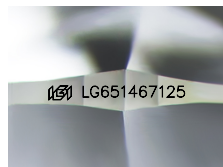
**ADDITIONAL GRADING INFORMATION**

Polish **EXCELLENT**  
 Symmetry **GOOD**  
 Fluorescence **SLIGHT**  
 Inscription(s) **IGI LG651467125**

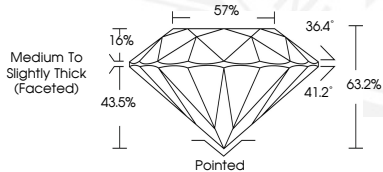
Comments: This Laboratory Grown Diamond was created by Chemical Vapor Deposition (CVD) growth process. Indications of post-growth treatment.

**ELECTRONIC COPY**

**LG651467125**



Sample Image Used



September 19, 2024  
 IGI Report Number **LG651467125**  
 ROUND BRILLIANT  
 LABORATORY GROWN DIAMOND  
 4.29 - 4.32 X 2.72 MM  
 Carat Weight **0.31 CARAT**  
 Color Grade **FANCY VIVID PINK**  
 Clarity Grade **VS 1**  
 Cut Grade **VERY GOOD**  
 Polish **EXCELLENT**  
 Symmetry **GOOD**  
 Fluorescence **SLIGHT**  
 Inscription(s) **IGI LG651467125**

Comments: This Laboratory Grown Diamond was created by Chemical Vapor Deposition (CVD) growth process. Indications of post-growth treatment.



September 19, 2024  
 IGI Report Number **LG651467125**  
 ROUND BRILLIANT  
 LABORATORY GROWN DIAMOND  
 4.29 - 4.32 X 2.72 MM  
 Carat Weight **0.31 CARAT**  
 Color Grade **FANCY VIVID PINK**  
 Clarity Grade **VS 1**  
 Cut Grade **VERY GOOD**  
 Polish **EXCELLENT**  
 Symmetry **GOOD**  
 Fluorescence **SLIGHT**  
 Inscription(s) **IGI LG651467125**

Comments: This Laboratory Grown Diamond was created by Chemical Vapor Deposition (CVD) growth process. Indications of post-growth treatment.

THIS DOCUMENT WAS PRODUCED WITH THE FOLLOWING SECURITY MEASURES: SPECIAL DOCUMENT PAPER, PINK SCREENS, WATERMARK, BACKGROUND DESIGN, HOLOGRAM AND OTHER SECURITY FEATURES NOT LISTED AND DO EXCEED DOCUMENT SECURITY INDUSTRY GUIDELINES.

For terms & conditions and to verify this report, please visit [www.igi.org](http://www.igi.org)