



ELECTRONIC COPY

LG651453460
Report verification at igi.org



September 19, 2024
IGI Report Number **LG651453460**
Description **LABORATORY GROWN DIAMOND**
Shape and Cutting Style **CUSHION MODIFIED BRILLIANT**
Measurements **8.72 X 7.12 X 4.55 MM**
GRADING RESULTS
Carat Weight **2.62 CARATS**
Color Grade **FANCY YELLOW**
Clarity Grade **VS 1**

LABORATORY GROWN DIAMOND REPORT

September 19, 2024
IGI Report Number **LG651453460**
Description **LABORATORY GROWN DIAMOND**
Shape and Cutting Style **CUSHION MODIFIED BRILLIANT**
Measurements **8.72 X 7.12 X 4.55 MM**

GRADING RESULTS

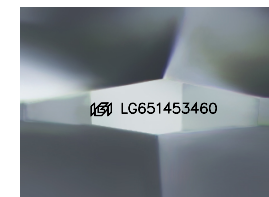
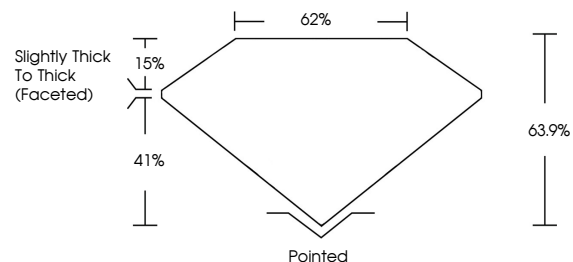
Carat Weight **2.62 CARATS**
Color Grade **FANCY YELLOW**
Clarity Grade **VS 1**

ADDITIONAL GRADING INFORMATION

Polish **EXCELLENT**
Symmetry **EXCELLENT**
Fluorescence **NONE**
Inscription(s) **IGI LG651453460**

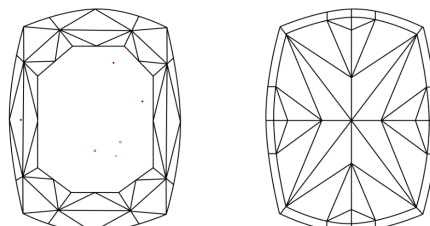
Comments: This Laboratory Grown Diamond was created by Chemical Vapor Deposition (CVD) growth process.

PROPORTIONS



Sample Image Used

CLARITY CHARACTERISTICS



KEY TO SYMBOLS

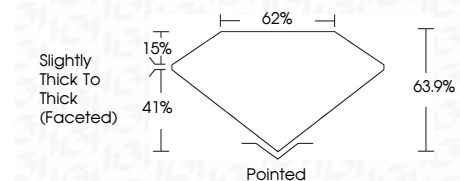
Red symbols indicate internal characteristics.
Green symbols indicate external characteristics.

COLOR

D E F G H I J Faint Very Light Light

CLARITY

| | | | | |
|---------------------|-----------------------------|------------------------|-------------------|------------------|
| IF | VS ¹⁻² | VS ¹⁻² | SI ¹⁻² | I ¹⁻³ |
| Internally Flawless | Very Very Slightly Included | Very Slightly Included | Slightly Included | Included |



ADDITIONAL GRADING INFORMATION

Polish **EXCELLENT**
Symmetry **EXCELLENT**
Fluorescence **NONE**
Inscription(s) **IGI LG651453460**
Comments: This Laboratory Grown Diamond was created by Chemical Vapor Deposition (CVD) growth process.



September 19, 2024
IGI Report No LG651453460
CUSHION MODIFIED BRILLIANT
8.72 X 7.12 X 4.55 MM
2.62 CARATS
FANCY YELLOW
VS 1
63.9%
62%
Slightly Thick To Thick (Faceted)
Pointed
EXCELLENT
EXCELLENT
NONE
IGI LG651453460
Comments: This Laboratory Grown Diamond was created by Chemical Vapor Deposition (CVD) growth process.