



ELECTRONIC COPY

LG650491579
Report verification at igi.org



September 7, 2024

IGI Report Number **LG650491579**

Description **LABORATORY GROWN DIAMOND**

Shape and Cutting Style **CUT CORNERED
RECTANGULAR MODIFIED
BRILLIANT**

Measurements **10.70 X 7.54 X 5.23 MM**

GRADING RESULTS

Carat Weight **4.07 CARATS**

Color Grade **FANCY YELLOW**

Clarity Grade **VVS 2**

LABORATORY GROWN DIAMOND REPORT

September 7, 2024

IGI Report Number **LG650491579**

Description **LABORATORY GROWN DIAMOND**

Shape and Cutting Style **CUT CORNERED RECTANGULAR
MODIFIED BRILLIANT**

Measurements **10.70 X 7.54 X 5.23 MM**

GRADING RESULTS

Carat Weight **4.07 CARATS**

Color Grade **FANCY YELLOW**

Clarity Grade **VVS 2**

ADDITIONAL GRADING INFORMATION

Polish **EXCELLENT**

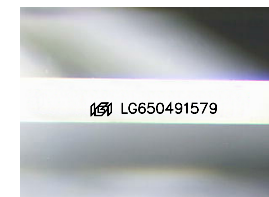
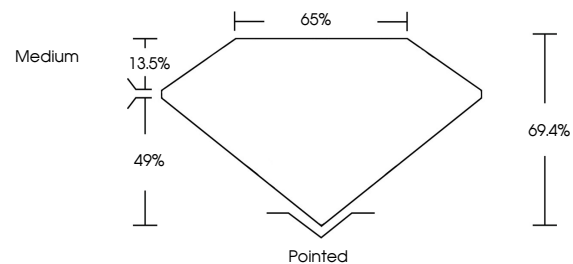
Symmetry **EXCELLENT**

Fluorescence **NONE**

Inscription(s) **IGI LG650491579**

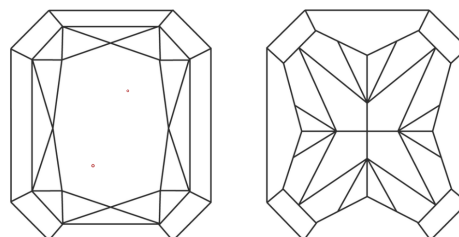
Comments: This Laboratory Grown Diamond was created by Chemical Vapor Deposition (CVD) growth process.

PROPORTIONS



Sample Image Used

CLARITY CHARACTERISTICS



KEY TO SYMBOLS

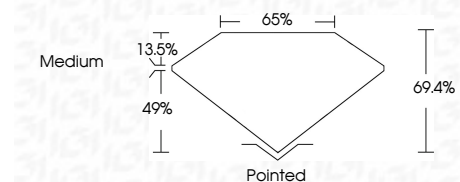
Red symbols indicate internal characteristics.
Green symbols indicate external characteristics.

COLOR

D E F G H I J Faint Very Light Light

CLARITY

IF	VS ¹⁻²	VS ¹⁻²	SI ¹⁻²	I ¹⁻³
Internally Flawless	Very Very Slightly Included	Very Slightly Included	Slightly Included	Included



ADDITIONAL GRADING INFORMATION

Polish **EXCELLENT**

Symmetry **EXCELLENT**

Fluorescence **NONE**

Inscription(s) **IGI LG650491579**

Comments: This Laboratory Grown Diamond was created by Chemical Vapor Deposition (CVD) growth process.



IGI



September 7, 2024
IGI Report No LG650491579
CUT CORNERED RECT. MODIFIED BRILLIANT

4.07 CARATS
FANCY YELLOW
VVS 2
69.4%
65%
Medium

Pointed
EXCELLENT
EXCELLENT
NONE
IGI LG650491579

Comments: This Laboratory Grown Diamond was created by Chemical Vapor Deposition (CVD) growth process.