



# INTERNATIONAL GEMOLOGICAL INSTITUTE

ELECTRONIC COPY

LG650490958



September 2, 2024

IGI Report Number LG650490958

ROUND BRILLIANT

LABORATORY GROWN DIAMOND

5.36 - 5.42 X 3.23 MM

Carat Weight 0.57 CARAT

Color Grade D

Clarity Grade VVS 1

Cut Grade IDEAL

Polish EXCELLENT

Symmetry EXCELLENT

Fluorescence NONE

Inscription(s) IGI LG650490958

Comments: HEARTS & ARROWS This

Laboratory Grown Diamond was

created by Chemical Vapor

Deposition (CVD) growth process.

Type Ila

## LABORATORY GROWN DIAMOND REPORT

September 2, 2024

IGI Report Number

LG650490958

Description

LABORATORY GROWN DIAMOND

Shape and Cutting Style

ROUND BRILLIANT

Measurements

5.36 - 5.42 X 3.23 MM

### GRADING RESULTS

Carat Weight

0.57 CARAT

Color Grade

D

Clarity Grade

VVS 1

Cut Grade

IDEAL

### ADDITIONAL GRADING INFORMATION

Polish

EXCELLENT

Symmetry

EXCELLENT

Fluorescence

NONE

Inscription(s)

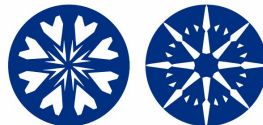
IGI LG650490958

Comments: HEARTS & ARROWS

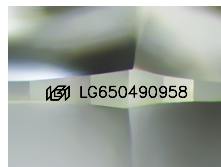
This Laboratory Grown Diamond was created by Chemical Vapor

Deposition (CVD) growth process.

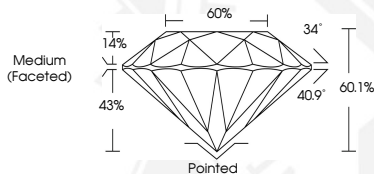
Type Ila



HEARTS & ARROWS



Sample Image Used



September 2, 2024

IGI Report Number LG650490958

ROUND BRILLIANT

LABORATORY GROWN DIAMOND

5.36 - 5.42 X 3.23 MM

Carat Weight 0.57 CARAT

Color Grade D

Clarity Grade VVS 1

Cut Grade IDEAL

Polish EXCELLENT

Symmetry EXCELLENT

Fluorescence NONE

Inscription(s) IGI LG650490958

Comments: HEARTS & ARROWS This

Laboratory Grown Diamond was

created by Chemical Vapor

Deposition (CVD) growth process.

Type Ila



THIS DOCUMENT WAS PRODUCED WITH THE FOLLOWING SECURITY MEASURES: SPECIAL DOCUMENT PAPER, INK SCREENS, WATERMARK, BACKGROUND DESIGNS, HOLOGRAM AND OTHER SECURITY FEATURES NOT LISTED AND DO EXCEED DOCUMENT SECURITY INDUSTRY GUIDELINES.

For terms & conditions and to verify this report, please visit [www.igi.org](http://www.igi.org)