



ELECTRONIC COPY

LABORATORY GROWN DIAMOND REPORT

September 5, 2024	
IGI Report Number	LG650489651
Description	LABORATORY GROWN DIAMOND
Shape and Cutting Style	SQUARE CUSHION BRILLIANT
Measurements	7.14 X 6.92 X 4.57 MM

GRADING RESULTS

Carat Weight	1.78 CARAT
Color Grade	E
Clarity Grade	VS 1

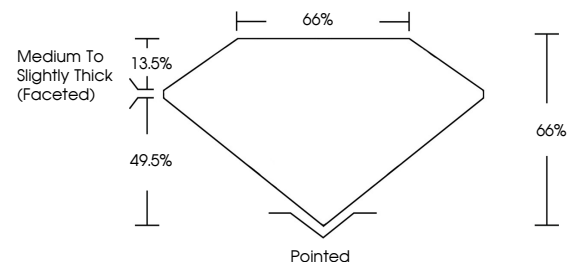
ADDITIONAL GRADING INFORMATION

Polish	EXCELLENT
Symmetry	EXCELLENT
Fluorescence	NONE
Inscription(s)	151 LG650489651

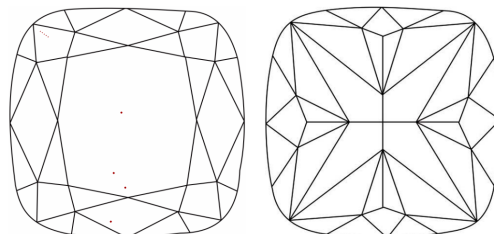
Comments: This Laboratory Grown Diamond was created by Chemical Vapor Deposition (CVD) growth process.
Type IIa

LG650489651
Report verification at lgi.org

PROPORTIONS

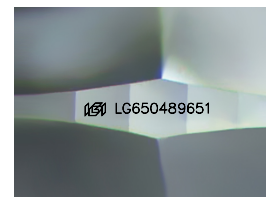


CLARITY CHARACTERISTICS



KEY TO SYMBOLS

Red symbols indicate internal characteristics.
Green symbols indicate external characteristics.



Sample Image Used

COLOR

D E F G H I J Faint Very Light Light

CLARITY

IF	VVS ^{1,2}	VS ^{1,2}	SI ^{1,2}	I ^{1,3}
Internally Flawless	Very Very Slightly Included	Very Slightly Included	Slightly Included	Included



© IGI 2020, International Gemological Institute

FD - 10 20

www.igi.org

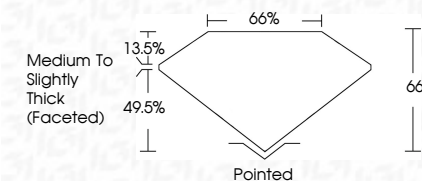
LABORATORY GROWN DIAMOND REPORT



September 5, 2024	
IGI Report Number	LG650489651
Description	LABORATORY GROWN DIAMOND
Shape and Cutting Style	SQUARE CUSHION BRILLIANT
Measurements	7.14 X 6.92 X 4.57 MM

GRADING RESULTS

Carat Weight	1.78 CARAT
Color Grade	E
Clarity Grade	VS 1



ADDITIONAL GRADING INFORMATION

Polish	EXCELLENT
Symmetry	EXCELLENT
Fluorescence	NONE
Inscription(s)	151 LG650489651

Comments: This Laboratory Grown Diamond was created by Chemical Vapor Deposition (CVD) growth process.
Type IIa



September 5, 2024	1.78 CARAT	VS 1	Polished	NONE	1691 LG550489651
GI Report No. LG550489651		65%	EXCELLENT		
SQUARE CUSHION BRILLIANT		65%	EXCELLENT		
14.14 x 9.92 x 4.57 MM		Medium to Slightly Thick (Faceted)			
Carat Weight	Color Grade	Clarity Grade	Cut	Fluorescence	Inscriptions(s)
		Depth	Polish		
		Gable	Symmetry		
		Grain			

Comments:
The Laboratory Grown Diamond was
grown using the Chemical Vapor Deposition
(CVD) growth process.
Type IIG